

Product datasheet for **TA308485**

BUD23 Rabbit Polyclonal Antibody

Product data:

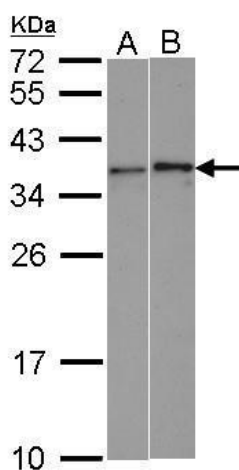
Product Type:	Primary Antibodies
Applications:	IHC, IP, WB
Recommended Dilution:	IHC:1:100-1:1000; WB:1:500-1:3000
Reactivity:	Human
Host:	Rabbit
Isotype:	IgG
Clonality:	Polyclonal
Immunogen:	Recombinant fragment corresponding to a region within amino acids 1 and 263 of WBSCR22 (Uniprot ID#O43709)
Formulation:	0.1M Tris, 0.1M Glycine, 10% Glycerol (pH7). 0.01% Thimerosal was added as a preservative.
Purification:	Purified by antigen-affinity chromatography.
Conjugation:	Unconjugated
Storage:	Store at -20°C as received.
Stability:	Stable for 12 months from date of receipt.
Predicted Protein Size:	32 kDa
Gene Name:	Williams-Beuren syndrome chromosome region 22
Database Link:	NP_059998 Entrez Gene 114049 Human O43709
Background:	This gene encodes a protein containing a nuclear localization signal and an S-adenosyl-L-methionine binding motif typical of methyltransferases, suggesting that the encoded protein may act on DNA methylation. This gene is deleted in Williams syndrome, a multisystem developmental disorder caused by the deletion of contiguous genes at 7q11.23. [provided by RefSeq]
Synonyms:	HASJ4442; HUSSY-3; MERM1; PP3381; WBMT
Protein Families:	Druggable Genome



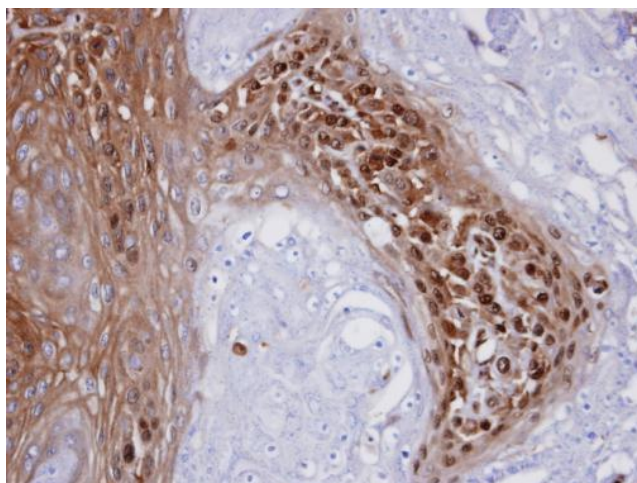
[View online »](#)

Protein Pathways: Androgen and estrogen metabolism, Histidine metabolism, Selenoamino acid metabolism, Tyrosine metabolism

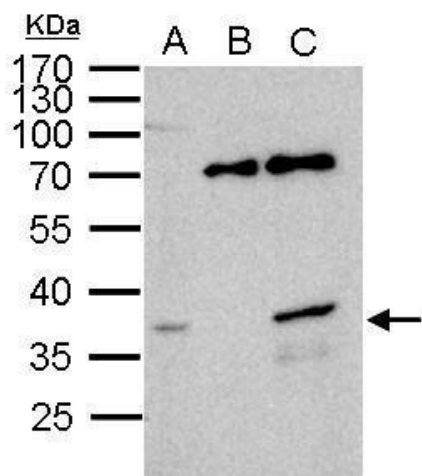
Product images:



Sample (30 ug of whole cell lysate). A: HeLa. B: HCT116. 12% SDS PAGE. TA308485 diluted at 1:1000.



Immunohistochemical analysis of paraffin-embedded CA922 xenograft, using WBSCR22 (TA308485) antibody at 1:100 dilution.



WBSR22 antibody immunoprecipitates WBSR22 protein in IP experiments. IP Sample: 1000 ug HeLa whole cell lysate/extract A. 40 ug HeLa whole cell lysate/extract B. Control with 2.5 ug of preimmune rabbit IgG C. Immunoprecipitation of WBSR22 protein by 2.