

Product datasheet for **TA308484**

MCPIP1 (ZC3H12A) Rabbit Polyclonal Antibody

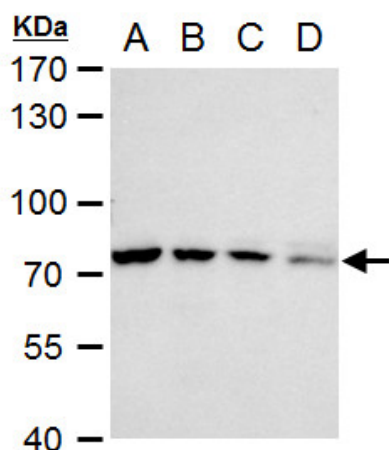
Product data:

Product Type:	Primary Antibodies
Applications:	IF, WB
Recommended Dilution:	ICC/IF:1:100-1:1000; WB:1:500-1:3000
Reactivity:	Human, Mouse (Predicted: Bovine)
Host:	Rabbit
Isotype:	IgG
Clonality:	Polyclonal
Immunogen:	Recombinant fragment corresponding to a region within amino acids 241 and 504 of ZC3H12A (Uniprot ID#Q5D1E8)
Formulation:	1XPBS, 20% Glycerol (pH7). 0.025% ProClin 300 was added as a preservative.
Purification:	Purified by antigen-affinity chromatography.
Conjugation:	Unconjugated
Storage:	Store at -20°C as received.
Stability:	Stable for 12 months from date of receipt.
Predicted Protein Size:	66 kDa
Gene Name:	zinc finger CCCH-type containing 12A
Database Link:	NP_079355 Entrez Gene 230738 Mouse Entrez Gene 80149 Human Q5D1E8
Background:	ZC3H12A is an MCP1 (CCL2; MIM 158105)-induced protein that acts as a transcriptional activator and causes cell death of cardiomyocytes, possibly via induction of genes associated with apoptosis. [supplied by OMIM]
Synonyms:	dJ423B22.1; MCPIP; MCPIP1
Note:	Seq homology of immunogen across species: Bovine (83%)

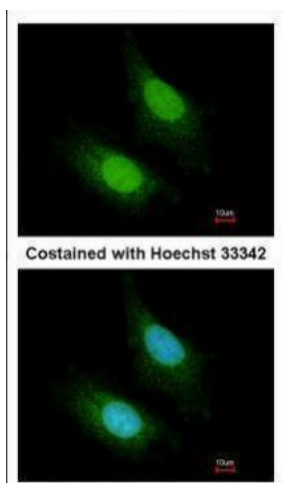


[View online »](#)

Product images:



ZC3H12A antibody [N3C3] detects ZC3H12A protein by western blot analysis. A. 30 ug 293T whole cell extract. B. 30 ug A431 whole cell extract. C. 30 ug HeLa whole cell extract. D. 30 ug HepG2 whole cell extract. 7.5 % SDS-PAGE. ZC3H12A antibody [N3C3] (TA3)



Immunofluorescence analysis of paraformaldehyde-fixed HeLa, using ZC3H12A (TA308484) antibody at 1:200 dilution.