

Product datasheet for **TA308480**

ELP3 Rabbit Polyclonal Antibody

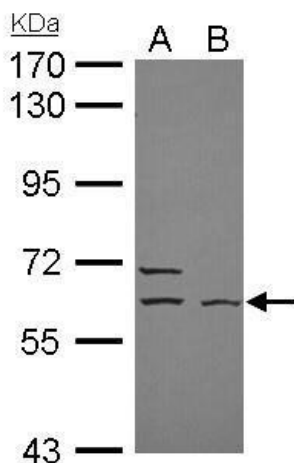
Product data:

Product Type:	Primary Antibodies
Applications:	IF, WB
Recommended Dilution:	ICC/IF:1:100-1:1000; WB:1:500-1:3000
Reactivity:	Human (Predicted: Rhesus Monkey)
Host:	Rabbit
Isotype:	IgG
Clonality:	Polyclonal
Immunogen:	Recombinant fragment corresponding to a region within amino acids 240 and 475 of ELP3 (Uniprot ID#Q9H9T3)
Formulation:	0.1M Tris, 0.1M Glycine, 10% Glycerol (pH7). 0.01% Thimerosal was added as a preservative.
Concentration:	lot specific
Purification:	Purified by antigen-affinity chromatography.
Conjugation:	Unconjugated
Storage:	Store at -20°C as received.
Stability:	Stable for 12 months from date of receipt.
Predicted Protein Size:	62 kDa
Gene Name:	elongator acetyltransferase complex subunit 3
Database Link:	NP_060561 Entrez Gene 55140 Human Q9H9T3
Background:	ELP3 is the catalytic subunit of the histone acetyltransferase elongator complex, which contributes to transcript elongation and also regulates the maturation of projection neurons (Creppe et al., 2009 [PubMed 19185337]). [supplied by OMIM]
Synonyms:	KAT9
Note:	Seq homology of immunogen across species: Rhesus Monkey (100%)

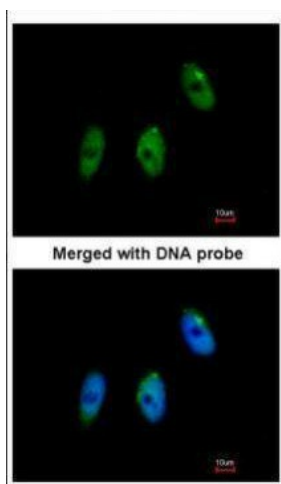


[View online »](#)

Product images:



ELP3 antibody [N3C3] detects ELP3 protein by Western blot analysis. A. 30 ug NT2D1 whole cell lysate/extract. B. 30 ug IMR32 whole cell lysate/extract. 7.5 % SDS-PAGE. ELP3 antibody [N3C3] (TA308480) dilution: 1:2000



Immunofluorescence analysis of paraformaldehyde-fixed HeLa, using ELP3 (TA308480) antibody at 1:100 dilution.