

Product datasheet for **TA308479**

ERCC8 Rabbit Polyclonal Antibody

Product data:

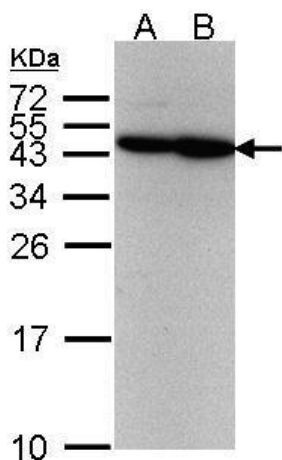
Product Type:	Primary Antibodies
Applications:	IF, WB
Recommended Dilution:	ICC/IF:1:100-1:1000; WB:1:500-1:3000; Functional:Assay:
Reactivity:	Human, Mouse
Host:	Rabbit
Isotype:	IgG
Clonality:	Polyclonal
Immunogen:	Recombinant fragment corresponding to a region within amino acids 106 and 330 of CSA (Uniprot ID#Q13216)
Formulation:	1XPBS, 20% Glycerol (pH7). 0.01% Thimerosal was added as a preservative.
Concentration:	lot specific
Purification:	Purified by antigen-affinity chromatography.
Conjugation:	Unconjugated
Storage:	Store at -20°C as received.
Stability:	Stable for 12 months from date of receipt.
Predicted Protein Size:	44 kDa
Gene Name:	ERCC excision repair 8, CSA ubiquitin ligase complex subunit
Database Link:	NP_001007234 Entrez Gene 71991 Mouse Entrez Gene 1161 Human Q13216
Background:	This gene encodes a WD repeat protein, which interacts with Cockayne syndrome type B (CSB) protein and with p44 protein, a subunit of the RNA polymerase II transcription factor IIH. Mutations in this gene have been identified in patients with hereditary disease Cockayne syndrome (CS). CS cells are abnormally sensitive to ultraviolet radiation and are defective in the repair of transcriptionally active genes. [provided by RefSeq]
Synonyms:	CKN1; CSA; UVSS2
Protein Families:	Druggable Genome, Transcription Factors



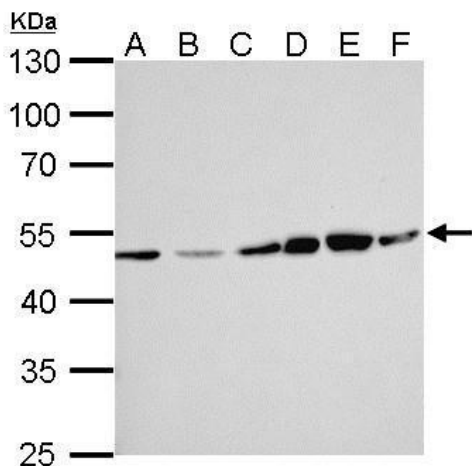
[View online »](#)

Protein Pathways: Nucleotide excision repair, Ubiquitin mediated proteolysis

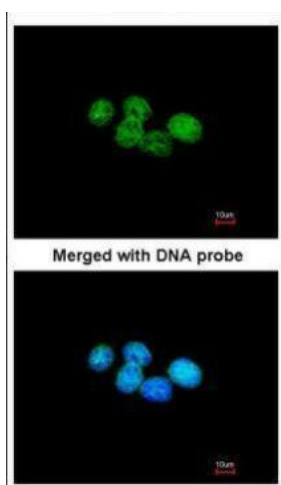
Product images:



Sample (30 ug of whole cell lysate). A:293T. B:A431. 12% SDS PAGE. TA308479 diluted at 1:500



ERCC8 antibody [N2C2], Internal detects ERCC8 protein by Western blot analysis. A. 30 ug Neuro2A whole cell lysate/extract. B. 30 ug GL261 whole cell lysate/extract. C. 30 ug C8D30 whole cell lysate/extract. D. 30 ug NIH-3T3 whole cell lysate/extract. E.



Immunofluorescence analysis of paraformaldehyde-fixed A431, using ERCC8 (CSA) (TA308479) antibody at 1:200 dilution.