

Product datasheet for **TA308477**

RICTOR Rabbit Polyclonal Antibody

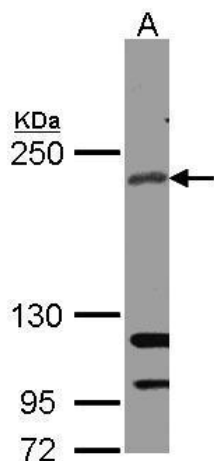
Product data:

Product Type:	Primary Antibodies
Applications:	IF, IHC, WB
Recommended Dilution:	ICC/IF:1:100-1:1000; IHC:1:100-1:1000; WB:1:500-1:3000
Reactivity:	Human (Predicted: Bovine)
Host:	Rabbit
Isotype:	IgG
Clonality:	Polyclonal
Immunogen:	Synthetic peptide corresponding to a region within amino acids 1648 and 1708 of RICTOR (Uniprot ID#Q6R327)
Formulation:	0.1M Tris, 0.1M Glycine, 10% Glycerol (pH7). 0.01% Thimerosal was added as a preservative.
Concentration:	lot specific
Purification:	Purified by antigen-affinity chromatography.
Conjugation:	Unconjugated
Storage:	Store at -20°C as received.
Stability:	Stable for 12 months from date of receipt.
Predicted Protein Size:	192 kDa
Gene Name:	RPTOR independent companion of MTOR complex 2
Database Link:	NP_689969 Entrez Gene 253260 Human Q6R327
Background:	RICTOR and MTOR (FRAP1; MIM 601231) are components of a protein complex that integrates nutrient- and growth factor-derived signals to regulate cell growth (Sarbasov et al., 2004 [PubMed 15268862]). [supplied by OMIM]
Synonyms:	AVO3; hAVO3; PIA
Note:	Seq homology of immunogen across species: Bovine (90%)
Protein Pathways:	mTOR signaling pathway

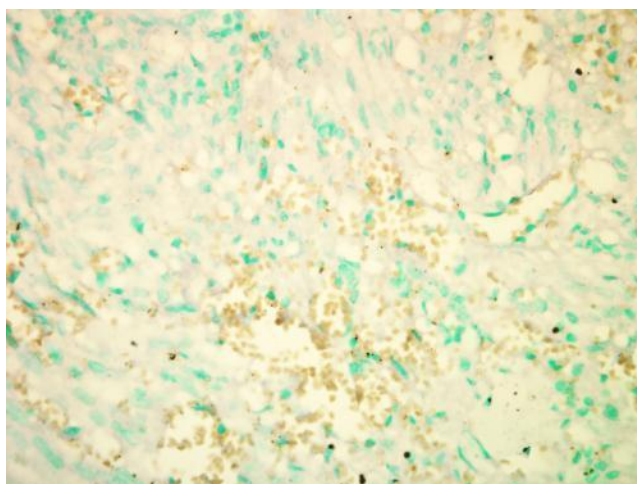


[View online »](#)

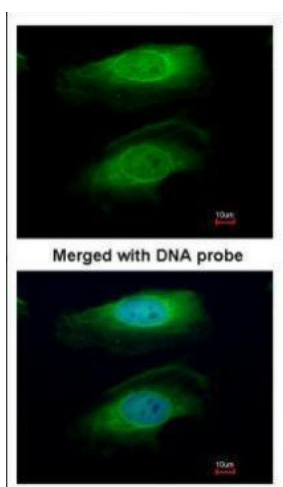
Product images:



Sample (30 ug whole cell lysate). A: A431. 5% SDS PAGE. TA308477 diluted at 1:1000



Staining of Human Kidney cancer tissue sections using anti-Rictor antibody (TA308477).



Immunofluorescence analysis of paraformaldehyde-fixed HeLa, using RICTOR (TA308477) antibody at 1:200 dilution.