

Product datasheet for **TA308476**

alpha Actinin 4 (ACTN4) Rabbit Polyclonal Antibody

Product data:

Product Type:	Primary Antibodies
Applications:	IF, IHC, WB
Recommended Dilution:	ICC/IF:1:100-1:1000; IHC:1:100-1:1000; WB:1:500-1:3000
Reactivity:	Human, Mouse (Predicted: Bovine, Rhesus Monkey)
Host:	Rabbit
Isotype:	IgG
Clonality:	Polyclonal
Immunogen:	Recombinant fragment corresponding to a region within amino acids 206 and 542 of alpha Actinin 4 (Uniprot ID#O43707)
Formulation:	0.1M Tris, 0.1M Glycine, 10% Glycerol (pH7). 0.01% Thimerosal was added as a preservative.
Concentration:	lot specific
Purification:	Purified by antigen-affinity chromatography.
Conjugation:	Unconjugated
Storage:	Store at -20°C as received.
Stability:	Stable for 12 months from date of receipt.
Predicted Protein Size:	105 kDa
Gene Name:	actinin alpha 4
Database Link:	NP_004915 Entrez Gene 60595 Mouse Entrez Gene 81 Human O43707



[View online »](#)

Background:

Alpha actinins belong to the spectrin gene superfamily which represents a diverse group of cytoskeletal proteins, including the alpha and beta spectrins and dystrophins. Alpha actinin is an actin-binding protein with multiple roles in different cell types. In nonmuscle cells, the cytoskeletal isoform is found along microfilament bundles and adherens-type junctions, where it is involved in binding actin to the membrane. In contrast, skeletal, cardiac, and smooth muscle isoforms are localized to the Z-disc and analogous dense bodies, where they help anchor the myofibrillar actin filaments. This gene encodes a nonmuscle, alpha actinin isoform which is concentrated in the cytoplasm, and thought to be involved in metastatic processes. Mutations in this gene have been associated with focal and segmental glomerulosclerosis. [provided by RefSeq]

Synonyms:

ACTININ-4; FSGS; FSGS1

Note:

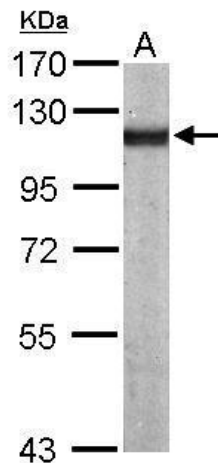
Seq homology of immunogen across species: Rhesus Monkey (100%), Bovine (100%)

Protein Families:

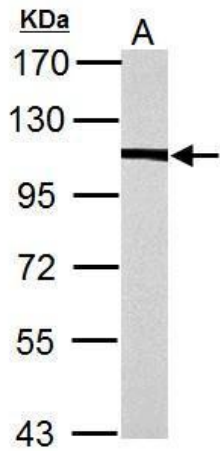
Druggable Genome

Protein Pathways:

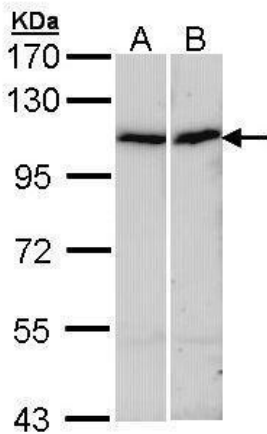
Adherens junction, Arrhythmogenic right ventricular cardiomyopathy (ARVC), Focal adhesion, Leukocyte transendothelial migration, Regulation of actin cytoskeleton, Systemic lupus erythematosus, Tight junction

Product images:

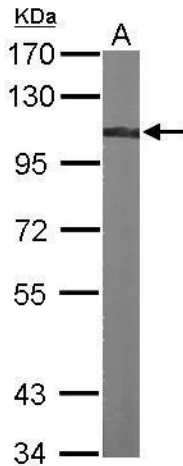
Sample (50 ug of whole cell lysate). A: Mouse brain. 7.5% SDS PAGE. TA308476 diluted at 1:1000.



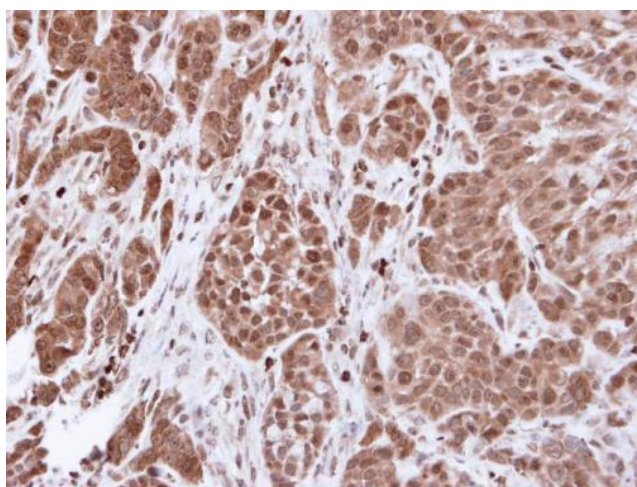
alpha Actinin 4 antibody [N2C1], Internal detects alpha Actinin 4 protein by Western blot analysis. A. 30 ug PC-12 whole cell lysate/extract. 7.5% SDS-PAGE. alpha Actinin 4 antibody [N2C1], Internal (TA308476) dilution: 1:3000.



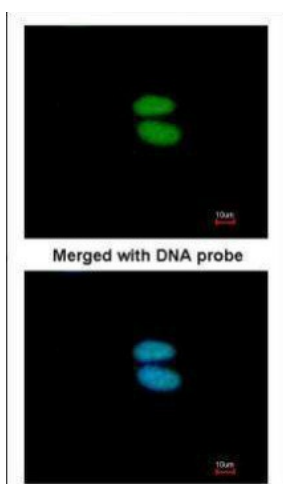
Sample (30 ug of whole cell lysate). A: A431. B: Hep G2. 7.5% SDS PAGE. TA308476 diluted at 1:1000.



Sample (30 ug of whole cell lysate). A: NIH-3T3. 7.5% SDS PAGE. TA308476 diluted at 1:1000.



Immunohistochemical analysis of paraffin-embedded A549 xenograft, using alpha Actinin 4 (TA308476) antibody at 1:500 dilution.



Immunofluorescence analysis of paraformaldehyde-fixed HeLa, using alpha Actinin 4 (TA308476) antibody at 1:200 dilution.