

Product datasheet for **TA308475**

EEF2K Rabbit Polyclonal Antibody

Product data:

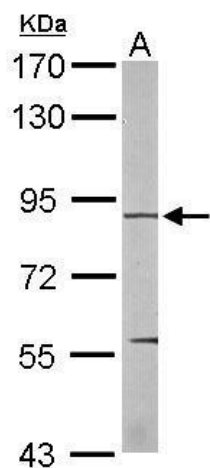
Product Type:	Primary Antibodies
Applications:	IF, IHC, WB
Recommended Dilution:	ICC/IF:1:100-1:1000; IHC:1:100-1:1000; WB:1:1000-1:10000
Reactivity:	Human, Mouse (Predicted: Bovine)
Host:	Rabbit
Isotype:	IgG
Clonality:	Polyclonal
Immunogen:	Recombinant fragment corresponding to a region within amino acids 1 and 268 of EEF2K (Uniprot ID#O00418)
Formulation:	0.1M Tris, 0.1M Glycine, 10% Glycerol (pH7). 0.01% Thimerosal was added as a preservative.
Concentration:	lot specific
Purification:	Purified by antigen-affinity chromatography.
Conjugation:	Unconjugated
Storage:	Store at -20°C as received.
Stability:	Stable for 12 months from date of receipt.
Predicted Protein Size:	82 kDa
Gene Name:	eukaryotic elongation factor 2 kinase
Database Link:	NP_037434 Entrez Gene 13631 Mouse Entrez Gene 29904 Human O00418
Background:	This gene encodes a highly conserved protein kinase in the calmodulin-mediated signaling pathway that links activation of cell surface receptors to cell division. This kinase is involved in the regulation of protein synthesis. It phosphorylates eukaryotic elongation factor 2 (EEF2) and thus inhibits the EEF2 function. The activity of this kinase is increased in many cancers and may be a valid target for anti-cancer treatment. [provided by RefSeq]
Synonyms:	eEF-2K; HSU93850
Note:	Seq homology of immunogen across species: Bovine (90%)



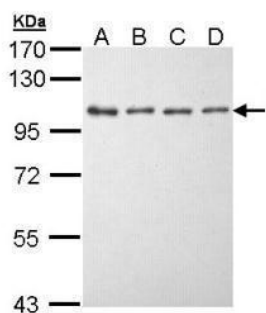
[View online »](#)

Protein Families: Druggable Genome, Protein Kinase

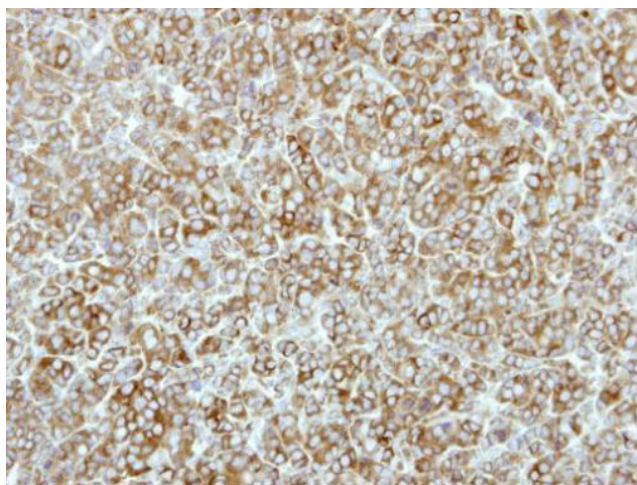
Product images:



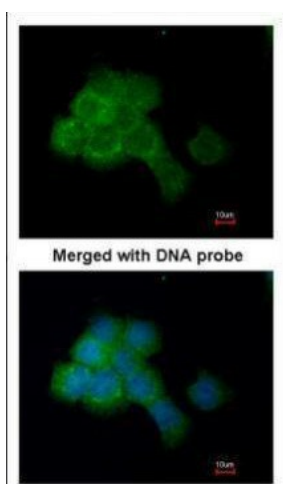
Sample (50 ug of whole cell lysate). A: mouse liver. 7.5% SDS PAGE. TA308475 diluted at 1:1000.



Sample (30 ug of whole cell lysate). A: A431. B: H1299. C: HeLa. D: Hep G2. 7.5% SDS PAGE. TA308475 diluted at 1:5000.



Immunohistochemical analysis of paraffin-embedded BT483 xenograft, using eEF-2K (TA308475) antibody at 1:500 dilution.



Immunofluorescence analysis of paraformaldehyde-fixed A431, using eEF-2K (TA308475) antibody at 1:200 dilution.