

Product datasheet for **TA308473**

Claudin 14 (CLDN14) Rabbit Polyclonal Antibody

Product data:

Product Type:	Primary Antibodies
Applications:	WB
Recommended Dilution:	WB:1:500-1:3000
Reactivity:	Human (Predicted: Rat, Pig, Rhesus Monkey, Mouse)
Host:	Rabbit
Isotype:	IgG
Clonality:	Polyclonal
Immunogen:	Synthetic peptide corresponding to a region within amino acids 177 and 239 of Claudin 14 (Uniprot ID#O95500)
Formulation:	1XPBS, 40% Glycerol (pH7). 0.01% Thimerosal was added as a preservative.
Concentration:	lot specific
Purification:	Purified by antigen-affinity chromatography.
Conjugation:	Unconjugated
Storage:	Store at -20°C as received.
Stability:	Stable for 12 months from date of receipt.
Predicted Protein Size:	26 kDa
Gene Name:	claudin 14
Database Link:	NP_652763 Entrez Gene 56173 Mouse Entrez Gene 304073 Rat Entrez Gene 23562 Human O95500



[View online »](#)

Background: Tight junctions represent one mode of cell-to-cell adhesion in epithelial or endothelial cell sheets, forming continuous seals around cells and serving as a physical barrier to prevent solutes and water from passing freely through the paracellular space. These junctions are comprised of sets of continuous networking strands in the outwardly facing cytoplasmic leaflet, with complementary grooves in the inwardly facing extracytoplasmic leaflet. The protein encoded by this gene, a member of the claudin family, is an integral membrane protein and a component of tight junction strands. The encoded protein also binds specifically to the WW domain of Yes-associated protein. Defects in this gene are the cause of an autosomal recessive form of nonsyndromic sensorineural deafness. Several transcript variants encoding the same protein have been found for this gene. [provided by RefSeq]

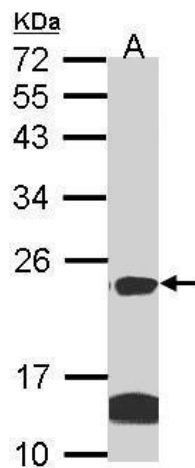
Synonyms: DFNB29

Note: Seq homology of immunogen across species: Mouse (92%), Rat (92%), Pig (85%), Rhesus Monkey (100%)

Protein Families: Druggable Genome, Transmembrane

Protein Pathways: Cell adhesion molecules (CAMs), Leukocyte transendothelial migration, Tight junction

Product images:



Sample (30 ug of whole cell lysate). A: Hela. B: Hep G2. 12% SDS PAGE. TA308473 diluted at 1:1000.