

Product datasheet for **TA308472**

TJP1 Rabbit Polyclonal Antibody

Product data:

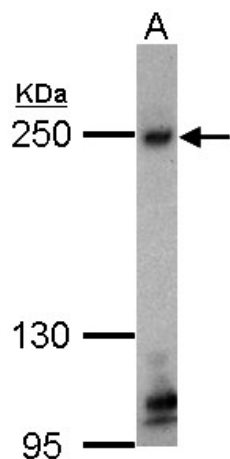
Product Type:	Primary Antibodies
Applications:	WB
Recommended Dilution:	WB:1:500-1:3000
Reactivity:	Human (Predicted: Mouse, Rat)
Host:	Rabbit
Isotype:	IgG
Clonality:	Polyclonal
Immunogen:	Recombinant fragment corresponding to a region within amino acids 1574 and 1748 of ZO-1 (Uniprot ID#Q07157)
Formulation:	1XPBS, 1% BSA, 20% Glycerol (pH7). 0.01% Thimerosal was added as a preservative.
Concentration:	lot specific
Purification:	Purified by antigen-affinity chromatography.
Conjugation:	Unconjugated
Storage:	Store at -20°C as received.
Stability:	Stable for 12 months from date of receipt.
Predicted Protein Size:	187 kDa
Gene Name:	tight junction protein 1
Database Link:	NP_003248 Entrez Gene 21872 MouseEntrez Gene 292994 RatEntrez Gene 7082 Human Q07157
Background:	This gene encodes a protein located on a cytoplasmic membrane surface of intercellular tight junctions. The encoded protein may be involved in signal transduction at cell-cell junctions. Two transcript variants encoding distinct isoforms have been identified for this gene. [provided by RefSeq]
Synonyms:	ZO-1
Note:	Seq homology of immunogen across species: Mouse (99%), Rat (99%)
Protein Families:	Druggable Genome



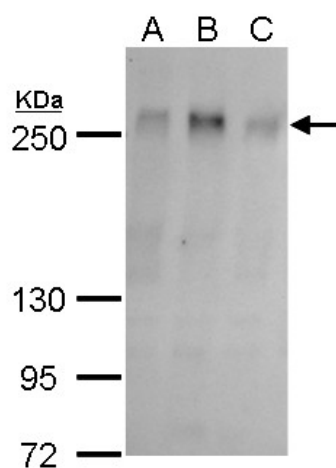
[View online »](#)

Protein Pathways: Adherens junction, Epithelial cell signaling in Helicobacter pylori infection, Gap junction, Tight junction, Vibrio cholerae infection

Product images:



Sample (30 ug of whole cell lysate). @A: HCT116.



ZO-1 antibody detects ZO-1 protein by western blot analysis. A. 30 ug 293T whole cell lysate/extract. B. 30 ug A431 whole cell lysate/extract. C. 30 ug HeLa whole cell lysate/extract. 5 % SDS-PAGE. ZO-1 antibody (TA308472) dilution: 1:500