

Product datasheet for **TA308471**

SPFH2 (ERLIN2) Rabbit Polyclonal Antibody

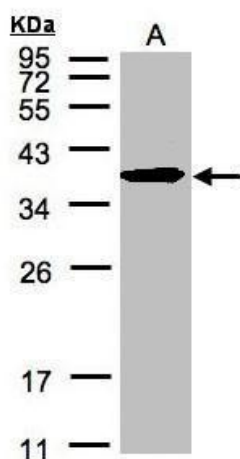
Product data:

Product Type:	Primary Antibodies
Applications:	IHC, WB
Recommended Dilution:	IHC:1:100-1:1000; WB:1:500-1:3000
Reactivity:	Human (Predicted: Rat, Rhesus Monkey, Mouse)
Host:	Rabbit
Isotype:	IgG
Clonality:	Polyclonal
Immunogen:	Synthetic peptide corresponding to a region within amino acids 278 and 339 of SPFH2 (Uniprot ID#O94905)
Formulation:	0.1M Tris, 0.1M Glycine, 10% Glycerol (pH7). 0.01% Thimerosal was added as a preservative.
Concentration:	lot specific
Purification:	Purified by antigen-affinity chromatography.
Conjugation:	Unconjugated
Storage:	Store at -20°C as received.
Stability:	Stable for 12 months from date of receipt.
Predicted Protein Size:	38 kDa
Gene Name:	ER lipid raft associated 2
Database Link:	NP_001003791 Entrez Gene 244373 Mouse Entrez Gene 290823 Rat Entrez Gene 11160 Human O94905
Synonyms:	C8orf2; Erlin-2; NET32; SPFH2; SPG18
Note:	Seq homology of immunogen across species: Mouse (83%), Rat (92%), Rhesus Monkey (100%)

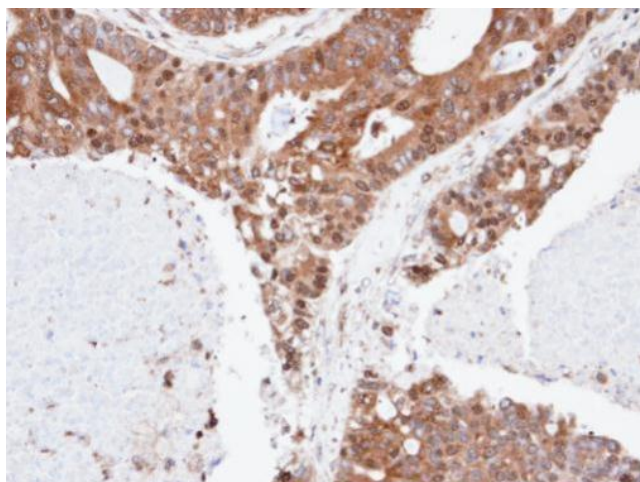


[View online »](#)

Product images:



Sample (30 ug of whole cell lysate). A:HeLa S3.
12% SDS PAGE. TA308471 diluted at 1:500



Immunohistochemical analysis of paraffin-
embedded endo mitral OVCA, using ERLIN2
(TA308471) antibody at 1:100 dilution.