

Product datasheet for **TA308469**

RGS10 Rabbit Polyclonal Antibody

Product data:

Product Type:	Primary Antibodies
Applications:	IHC, WB
Recommended Dilution:	IHC:1:100-1:1000; WB:1:500-1:3000
Reactivity:	Human (Predicted: Mouse)
Host:	Rabbit
Isotype:	IgG
Clonality:	Polyclonal
Immunogen:	Recombinant fragment corresponding to a region within amino acids 1 and 173 of RGS10 (Uniprot ID#O43665)
Formulation:	0.1M Tris, 0.1M Glycine, 20% Glycerol (pH7). 0.01% Thimerosal was added as a preservative.
Concentration:	lot specific
Purification:	Purified by antigen-affinity chromatography.
Conjugation:	Unconjugated
Storage:	Store at -20°C as received.
Stability:	Stable for 12 months from date of receipt.
Predicted Protein Size:	21 kDa
Gene Name:	regulator of G-protein signaling 10
Database Link:	NP_001005339 Entrez Gene 67865 Mouse Entrez Gene 6001 Human O43665



[View online »](#)

Background:

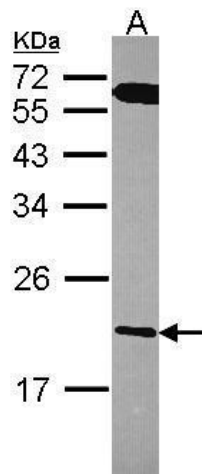
Regulator of G protein signaling (RGS) family members are regulatory molecules that act as GTPase activating proteins (GAPs) for G alpha subunits of heterotrimeric G proteins. RGS proteins are able to deactivate G protein subunits of the Gi alpha, Go alpha and Gq alpha subtypes. They drive G proteins into their inactive GDP-bound forms. Regulator of G protein signaling 10 belongs to this family. All RGS proteins share a conserved 120-amino acid sequence termed the RGS domain. This protein associates specifically with the activated forms of the two related G-protein subunits, G-alpha_{i3} and G-alpha_z but fails to interact with the structurally and functionally distinct G-alpha subunits. Regulator of G protein signaling 10 protein is localized in the nucleus. Two transcript variants encoding different isoforms have been found for this gene. [provided by RefSeq]

Synonyms:

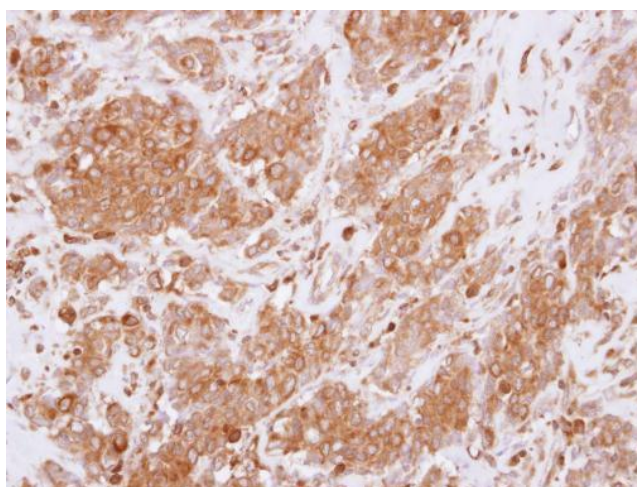
OTTHUMP00000020597; OTTHUMP00000069158; regulator of G-protein signaling 10; regulator of G-protein signalling 10

Note:

Seq homology of immunogen across species: Mouse (92%)

Product images:

Sample (30 ug of whole cell lysate). A: A431. 12% SDS PAGE. TA308469 diluted at 1:1000.



Immunohistochemical analysis of paraffin-embedded Breast ca, using RGS10 (TA308469) antibody at 1:250 dilution.