

## Product datasheet for **TA308468**

### VAPA Rabbit Polyclonal Antibody

#### Product data:

Product Type:	Primary Antibodies
Applications:	IHC, WB
Recommended Dilution:	IHC:1:100-1:1000; WB:1:500-1:3000
Reactivity:	Human, Mouse (Predicted: Rat, Zebrafish, Chicken, Bovine, X. tropicalis)
Host:	Rabbit
Isotype:	IgG
Clonality:	Polyclonal
Immunogen:	Synthetic peptide corresponding to a region within amino acids 29 and 122 of VAPA (Uniprot ID#Q9P0L0)
Formulation:	0.1M Tris, 0.1M Glycine, 10% Glycerol (pH7). 0.01% Thimerosal was added as a preservative.
Purification:	Purified by antigen-affinity chromatography.
Conjugation:	Unconjugated
Storage:	Store at -20°C as received.
Stability:	Stable for 12 months from date of receipt.
Predicted Protein Size:	28 kDa
Gene Name:	VAMP associated protein A
Database Link:	<a href="#">NP_003565</a> <a href="#">Entrez Gene 30960 Mouse</a> <a href="#">Entrez Gene 58857 Rat</a> <a href="#">Entrez Gene 9218 Human</a> <a href="#">Q9P0L0</a>
Background:	The protein encoded by this gene is a type IV membrane protein. It is present in the plasma membrane and intracellular vesicles. It may also be associated with the cytoskeleton. This protein may function in vesicle trafficking, membrane fusion, protein complex assembly and cell motility. Alternative splicing occurs at this locus and two transcript variants encoding distinct isoforms have been identified. [provided by RefSeq]
Synonyms:	hVAP-33; VAP-33; VAP-A; VAP33
Note:	Seq homology of immunogen across species: Rat (100%), Zebrafish (100%), Xenopus Tropicalis (100%), Chicken (100%), Bovine (100%)

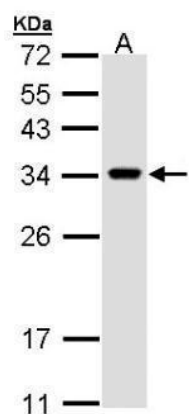


[View online »](#)

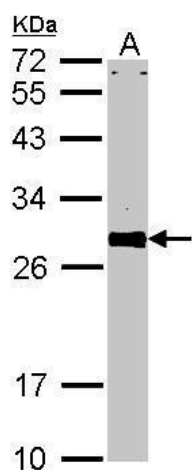
Protein Families: Transmembrane

Protein Pathways: Tight junction

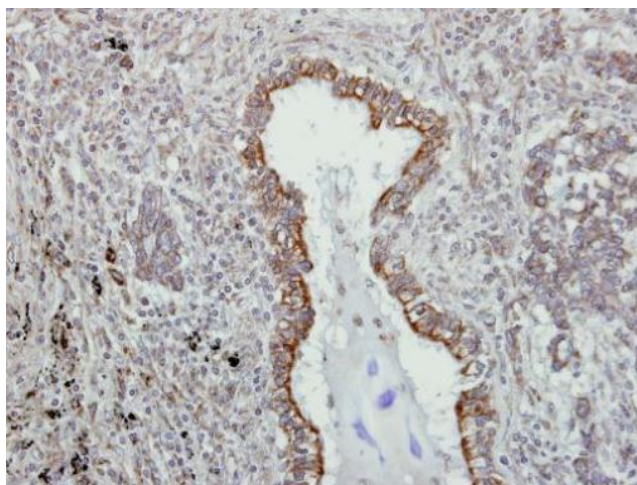
### Product images:



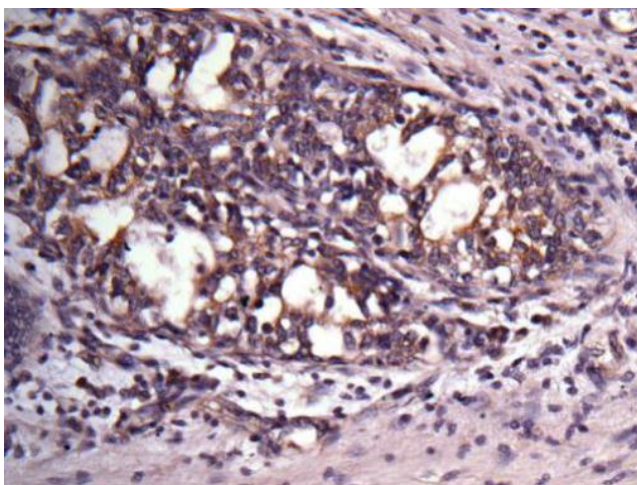
Sample (30 ug of whole cell lysate). A: H1299.  
12% SDS PAGE. TA308468 diluted at 1:1000



Sample (30 ug of whole cell lysate). A: NIH-3T3.  
12% SDS PAGE. VAPA antibody. TA308468 diluted  
at 1:1000.



Immunohistochemical analysis of paraffin-embedded lung AdCA, using VAPA (TA308468) antibody at 1:500 dilution.



Immunohistochemical analysis of paraffin-embedded breast ca, using VAPA (TA308468) antibody at 1:500 dilution.