

Product datasheet for **TA308467**

PFKFB3 Rabbit Polyclonal Antibody

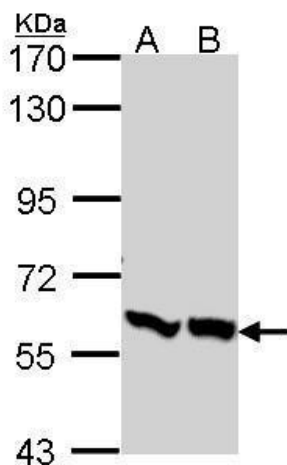
Product data:

| | |
|-------------------------|--|
| Product Type: | Primary Antibodies |
| Applications: | IHC, WB |
| Recommended Dilution: | WB:1:500-1:3000 |
| Reactivity: | Human |
| Host: | Rabbit |
| Isotype: | IgG |
| Clonality: | Polyclonal |
| Immunogen: | Synthetic peptide corresponding to a region within amino acids 457 and 520 of PFKFB3 (Uniprot ID#Q16875) |
| Formulation: | 0.1M Tris, 0.1M Glycine, 10% Glycerol (pH7). 0.01% Thimerosal was added as a preservative. |
| Concentration: | lot specific |
| Purification: | Purified by antigen-affinity chromatography. |
| Conjugation: | Unconjugated |
| Storage: | Store at -20°C as received. |
| Stability: | Stable for 12 months from date of receipt. |
| Predicted Protein Size: | 60 kDa |
| Gene Name: | 6-phosphofructo-2-kinase/fructose-2,6-biphosphatase 3 |
| Database Link: | NP_001138915 Entrez Gene 5209 Human Q16875 |
| Synonyms: | iPFK-2; IPFK2; PFK2 |
| Protein Families: | Druggable Genome |
| Protein Pathways: | Fructose and mannose metabolism |

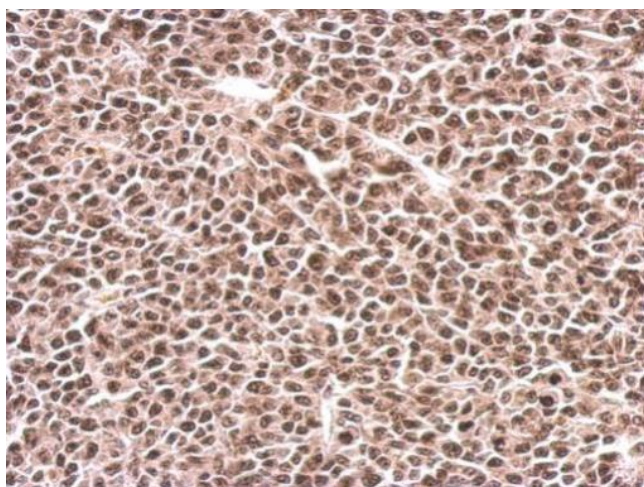


[View online »](#)

Product images:



Sample (30 ug of whole cell lysate). A: A431. B: H1299. 7.5% SDS PAGE. PFKFB3 antibody. TA308467 diluted at 1:1000.



PFKFB3 antibody [C3], C-term detects PFKFB3 protein at nucleus on BT483 xenograft by immunohistochemical analysis. Sample: Paraffin-embedded BT483 xenograft. PFKFB3 antibody [C3], C-term (TA308467) dilution: 1:500.