

Product datasheet for **TA308466**

MAP4K5 Rabbit Polyclonal Antibody

Product data:

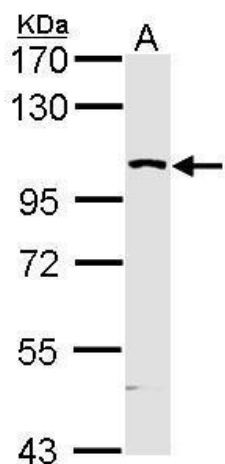
Product Type:	Primary Antibodies
Applications:	IF, IHC, WB
Recommended Dilution:	ICC/IF:1:100-1:1000; IHC:1:100-1:1000; WB:1:1000-1:10000
Reactivity:	Human (Predicted: Mouse, Rat, Bovine)
Host:	Rabbit
Isotype:	IgG
Clonality:	Polyclonal
Immunogen:	Synthetic peptide contain a sequence corresponding to a region within amino acids 417 and 482 of KHS
Formulation:	0.1M Tris, 0.1M Glycine, 10% Glycerol (pH7). 0.01% Thimerosal was added as a preservative.
Concentration:	lot specific
Purification:	Purified by antigen-affinity chromatography.
Conjugation:	Unconjugated
Storage:	Store at -20°C as received.
Stability:	Stable for 12 months from date of receipt.
Predicted Protein Size:	95 kDa
Gene Name:	mitogen-activated protein kinase kinase kinase kinase 5
Database Link:	NP_006566 Entrez Gene 399510 MouseEntrez Gene 503027 RatEntrez Gene 11183 Human Q9Y4K4
Background:	This gene encodes a member of the serine/threonine protein kinase family, that is highly similar to yeast SPS1/STE20 kinase. Yeast SPS1/STE20 functions near the beginning of the MAP kinase signal cascades that is essential for yeast pheromone response. This kinase was shown to activate Jun kinase in mammalian cells, which suggested a role in stress response. Two alternatively spliced transcript variants encoding the same protein have been described for this gene. [provided by RefSeq]
Synonyms:	GCKR; KHS; KHS1; MAPKKKK5


[View online »](#)

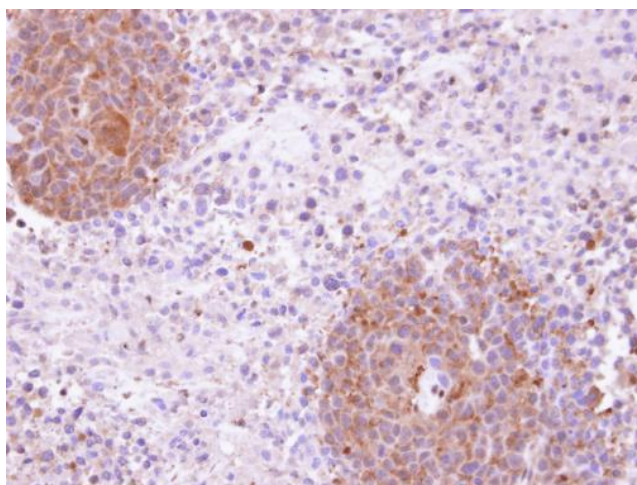
Note: Seq homology of immunogen across species: Mouse (94%), Rat (94%), Bovine (94%)

Protein Families: Druggable Genome, Protein Kinase

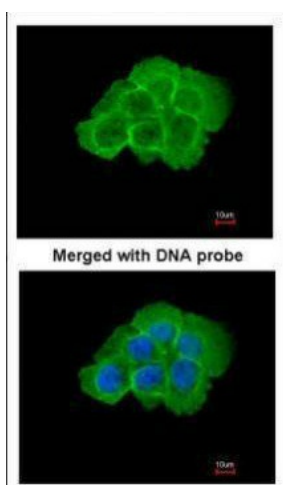
Product images:



Sample (30 ug of whole cell lysate). A: Molt-4.
12% SDS PAGE. MAP4K5 antibody. TA308466
diluted at 1:5000.



Immunohistochemical analysis of paraffin-
embedded SAS xenograft, using KHS (TA308466)
antibody at 1:100 dilution.



Immunofluorescence analysis of paraformaldehyde-fixed A431, using KHS (TA308466) antibody at 1:200 dilution.