

## Product datasheet for **TA308464**

### DYRK3 Rabbit Polyclonal Antibody

#### Product data:

Product Type:	Primary Antibodies
Applications:	WB
Recommended Dilution:	WB:1:500-1:3000
Reactivity:	Human, Mouse (Predicted: Rat, Cow)
Host:	Rabbit
Isotype:	IgG
Clonality:	Polyclonal
Immunogen:	Recombinant fragment contain a sequence corresponding to a region within amino acids 243 and 532 of Dyrk3 (Uniprot ID#O43781)
Formulation:	0.1M Tris, 0.1M Glycine, 10% Glycerol (pH7). 0.01% Thimerosal was added as a preservative.
Concentration:	lot specific
Purification:	Purified by antigen-affinity chromatography.
Conjugation:	Unconjugated
Storage:	Store at -20°C as received.
Stability:	Stable for 12 months from date of receipt.
Predicted Protein Size:	64 kDa
Gene Name:	dual specificity tyrosine phosphorylation regulated kinase 3
Database Link:	<a href="#">NP_003573</a> <a href="#">Entrez Gene 226419</a> <a href="#">MouseEntrez Gene 304775</a> <a href="#">RatEntrez Gene 8444</a> <a href="#">Human O43781</a>
Background:	This gene product belongs to the DYRK family of dual-specificity protein kinases that catalyze autophosphorylation on serine/threonine and tyrosine residues. The members of this family share structural similarity, however, differ in their substrate specificity, suggesting their involvement in different cellular functions. The encoded protein has been shown to autophosphorylate on tyrosine residue and catalyze phosphorylation of histones H3 and H2B in vitro. Alternatively spliced transcript variants encoding different isoforms have been identified. [provided by RefSeq]
Synonyms:	DYRK5; hYAK3-2; RED; REDK

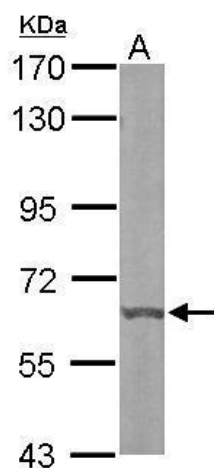


[View online »](#)

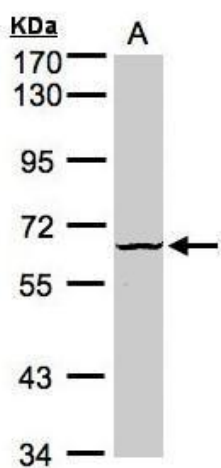
**Note:** Seq homology of immunogen across species: mouse (92%), Rat (94%), cow (95%)

**Protein Families:** Druggable Genome, Protein Kinase

**Product images:**



Sample (50 ug of whole cell lysate). A: mouse liver. 7.5% SDS PAGE. TA308464 diluted at 1:1000.



Sample (30ug whole cell lysate). A:Raji. 7.5% SDS PAGE. TA308464 diluted at 1:1000