

Product datasheet for **TA308463**

PSKH1 Rabbit Polyclonal Antibody

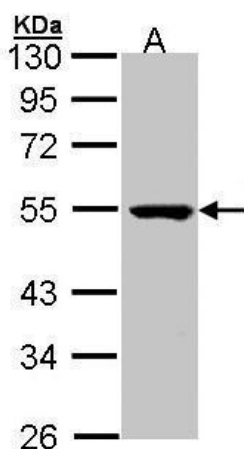
Product data:

| | |
|-------------------------|--|
| Product Type: | Primary Antibodies |
| Applications: | IF, WB |
| Recommended Dilution: | ICC/IF:1:100-1:1000; WB:1:500-1:3000 |
| Reactivity: | Human (Predicted: Mouse, Bovine) |
| Host: | Rabbit |
| Isotype: | IgG |
| Clonality: | Polyclonal |
| Immunogen: | Recombinant fragment corresponding to a region within amino acids 1 and 218 of PSKH1 (Uniprot ID#P11801) |
| Formulation: | 0.1M Tris, 0.1M Glycine, 10% Glycerol (pH7). 0.01% Thimerosal was added as a preservative. |
| Concentration: | lot specific |
| Purification: | Purified by antigen-affinity chromatography. |
| Conjugation: | Unconjugated |
| Storage: | Store at -20°C as received. |
| Stability: | Stable for 12 months from date of receipt. |
| Predicted Protein Size: | 48 kDa |
| Gene Name: | protein serine kinase H1 |
| Database Link: | NP_006733 Entrez Gene 244631 Mouse Entrez Gene 5681 Human P11801 |
| Synonyms: | protein serine kinase H1; serine; threonine-protein kinase H1 |
| Note: | Seq homology of immunogen across species: Mouse (95%), Bovine (95%) |
| Protein Families: | Druggable Genome, Protein Kinase |

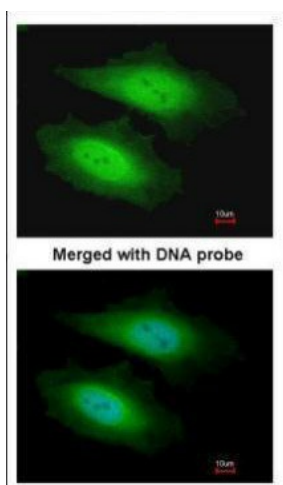


[View online »](#)

Product images:



Sample (30 ug of whole cell lysate). A: Molt-4. 10 % SDS PAGE. TA308463 diluted at 1:1000



Immunofluorescence analysis of paraformaldehyde-fixed HeLa, using PSKH1 (TA308463) antibody at 1:200 dilution.