

Product datasheet for **TA308460**

ERG Rabbit Polyclonal Antibody

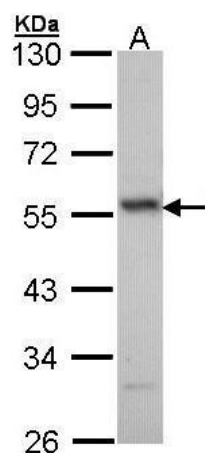
Product data:

Product Type:	Primary Antibodies
Applications:	IF, WB
Recommended Dilution:	ICC/IF:1:100-1:1000; WB:1:1000-1:10000
Reactivity:	Human (Predicted: Rat, Pig, Chicken, X. tropicalis)
Host:	Rabbit
Isotype:	IgG
Clonality:	Polyclonal
Immunogen:	Synthetic peptide corresponding to a region within amino acids 419 and 486 of ERG (Uniprot ID#P11308)
Formulation:	1XPBS, 20% Glycerol (pH7). 0.01% Thimerosal was added as a preservative.
Concentration:	lot specific
Purification:	Affinity purified by Protein A.
Conjugation:	Unconjugated
Storage:	Store at -20°C as received.
Stability:	Stable for 12 months from date of receipt.
Predicted Protein Size:	52 kDa
Gene Name:	ERG, ETS transcription factor
Database Link:	NP_001129627 Entrez Gene 170909 RatEntrez Gene 2078 Human P11308
Synonyms:	erg-3; p55
Note:	Seq homology of immunogen across species: Rat (92%), Xenopus Tropicalis (92%), Pig (92%), Chicken (85%)
Protein Families:	Druggable Genome, Transcription Factors

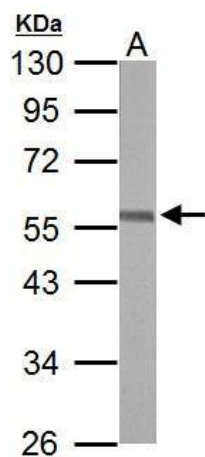


[View online »](#)

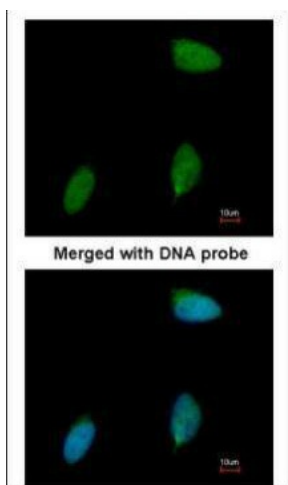
Product images:



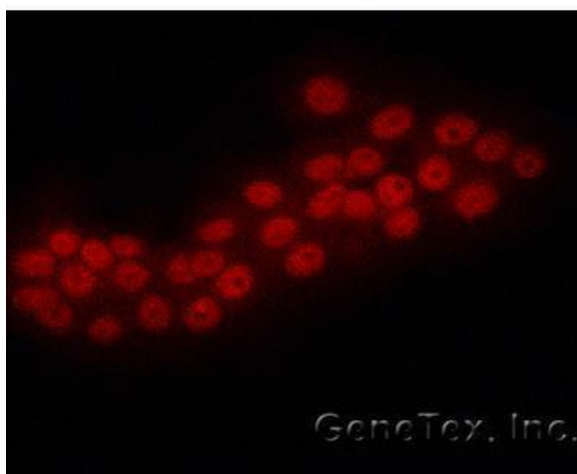
Sample (30 ug of whole cell lysate). A: H1299. 10% SDS PAGE. TA308460 diluted at 1:1000.



Sample (50 ug of whole cell lysate). A: mouse brain. 10% SDS PAGE. TA308460 diluted at 1:10000.



Immunofluorescence analysis of paraformaldehyde-fixed human pancreatic cancer cell line, using ERG (TA308460) antibody at 1:50 dilution.



Immunofluorescence analysis of human pancreatic cancer cell line, using ERG (TA308460) antibody at 1:50 dilution.