

Product datasheet for **TA308459**

Triosephosphate isomerase (TPI1) Rabbit Polyclonal Antibody

Product data:

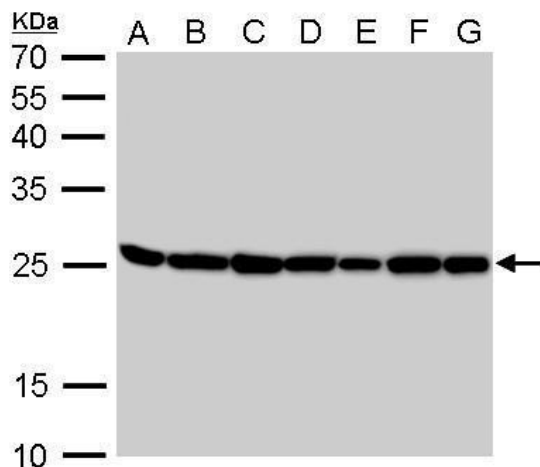
Product Type:	Primary Antibodies
Applications:	IF, IHC, WB
Recommended Dilution:	ELISA:; ICC/IF:1:100-1:1000; IHC:1:100-1:1000; WB:1:500-1:3000
Reactivity:	Human (Predicted: Yeast, Dog, Chicken, Chimpanzee, Bovine, X. tropicalis)
Host:	Rabbit
Isotype:	IgG
Clonality:	Polyclonal
Immunogen:	Synthetic peptide corresponding to a region within amino acids 187 and 249 of Triosephosphate isomerase (Uniprot ID#P60174)
Formulation:	1XPBS, 1% BSA, 20% Glycerol (pH7). 0.025% ProClin 300 was added as a preservative.
Concentration:	lot specific
Purification:	Purified by antigen-affinity chromatography.
Conjugation:	Unconjugated
Storage:	Store at -20°C as received.
Stability:	Stable for 12 months from date of receipt.
Predicted Protein Size:	27 kDa
Gene Name:	triosephosphate isomerase 1
Database Link:	NP_000356 Entrez Gene 477711 Dog Entrez Gene 7167 Human P60174
Background:	This gene encodes an enzyme, consisting of two identical proteins, which catalyzes the isomerization of glyceraldehydes 3-phosphate (G3P) and dihydroxy-acetone phosphate (DHAP) in glycolysis and gluconeogenesis. Mutations in this gene are associated with triosephosphate isomerase deficiency. Pseudogenes have been identified on chromosomes 1, 4, 6 and 7. Alternative splicing results in multiple transcript variants. [provided by RefSeq]
Synonyms:	HEL-S-49; TIM; TPI; TPID


[View online »](#)

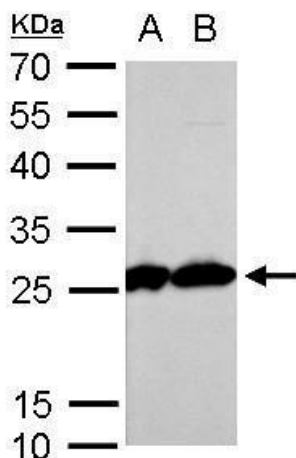
Note: Seq homology of immunogen across species: Yeast (83%), Xenopus Tropicalis (92%), Dog (100%), Chicken (92%), Chimpanzee (100%), Bovine (100%)

Protein Pathways: Fructose and mannose metabolism, Glycolysis / Gluconeogenesis, Inositol phosphate metabolism, Metabolic pathways

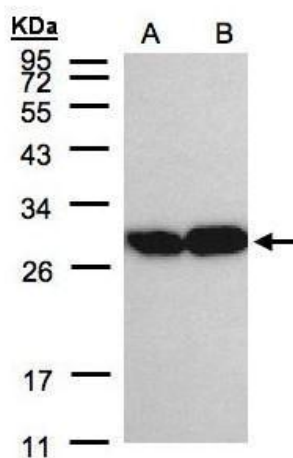
Product images:



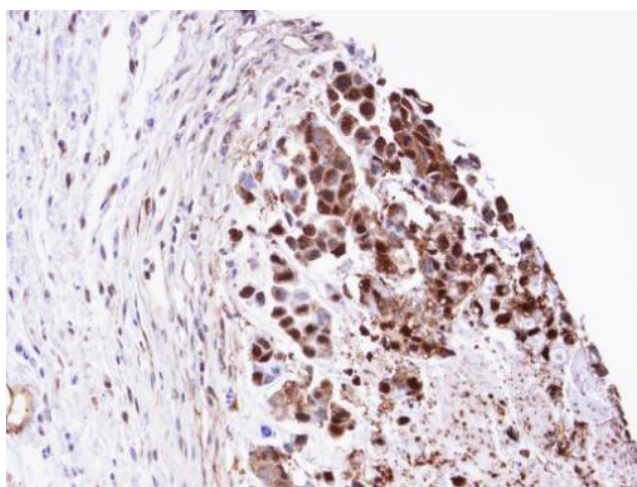
Triosephosphate isomerase antibody [C2C3], C-term detects TPI1 protein by Western blot analysis. A. 30 ug Neuro2A whole cell lysate/extract. B. 30 ug GL261 whole cell lysate/extract. C. 30 ug C8D30 whole cell lysate/extract. D. 30 ug NIH-3T3 whole cell ly



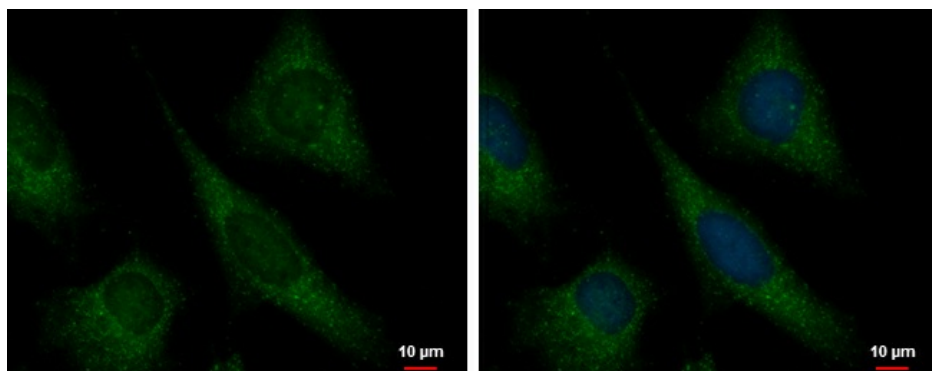
Triosephosphate isomerase antibody [C2C3], C-term detects TPI1 protein by Western blot analysis. A. 30 ug PC-12 whole cell lysate/extract. B. 30 ug Rat2 whole cell lysate/extract. 12 % SDS-PAGE. Triosephosphate isomerase antibody [C2C3], C-term (TA308459)



Sample (30 ug of whole cell lysate). A:A431.
B:H1299. 12% SDS PAGE. TA308459 diluted at 1:2000



Immunohistochemical analysis of paraffin-embedded SNU-16 xenograft, using TPI1 (TA308459) antibody at 1:100 dilution.



Triosephosphate isomerase antibody [C2C3], C-term detects Triosephosphate isomerase protein at cytoplasm by immunofluorescent analysis.
Sample: HeLa cells were fixed in 4% paraformaldehyde at RT for 15 min. Green: Triosephosphate isomerase protein stained