

Product datasheet for **TA308458**

TACC2 Rabbit Polyclonal Antibody

Product data:

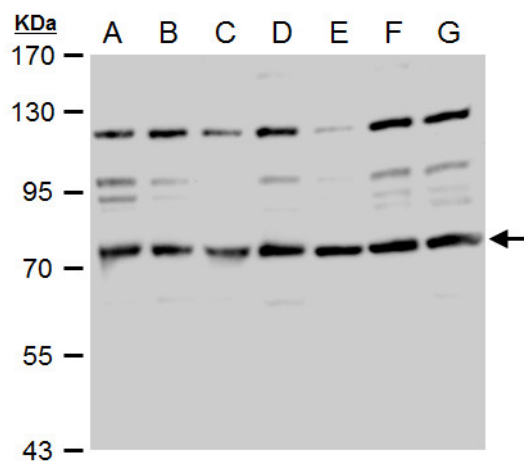
Product Type:	Primary Antibodies
Applications:	IHC, WB
Recommended Dilution:	IHC:1:100-1:1000; WB:1:500-1:3000
Reactivity:	Human (Predicted: Mouse, Rat)
Host:	Rabbit
Isotype:	IgG
Clonality:	Polyclonal
Immunogen:	Synthetic peptide contain a sequence corresponding to a region within amino acids 237 and 293 of TACC2 (Uniprot ID#O95359)
Formulation:	0.1M Tris, 0.1M Glycine, 10% Glycerol (pH7). 0.01% Thimerosal was added as a preservative.
Concentration:	lot specific
Purification:	Purified by antigen-affinity chromatography.
Conjugation:	Unconjugated
Storage:	Store at -20°C as received.
Stability:	Stable for 12 months from date of receipt.
Predicted Protein Size:	119 kDa
Gene Name:	transforming acidic coiled-coil containing protein 2
Database Link:	NP_996744 Entrez Gene 57752 Mouse Entrez Gene 309025 Rat Entrez Gene 10579 Human O95359
Background:	Transforming acidic coiled-coil proteins are a conserved family of centrosome- and microtubule-interacting proteins that are implicated in cancer. This gene encodes a protein that concentrates at centrosomes throughout the cell cycle. This gene lies within a chromosomal region associated with tumorigenesis. Expression of this gene is induced by erythropoietin and is thought to affect the progression of breast tumors. Several transcript variants encoding different isoforms have been found for this gene. [provided by RefSeq]
Synonyms:	AZU-1; ECTACC



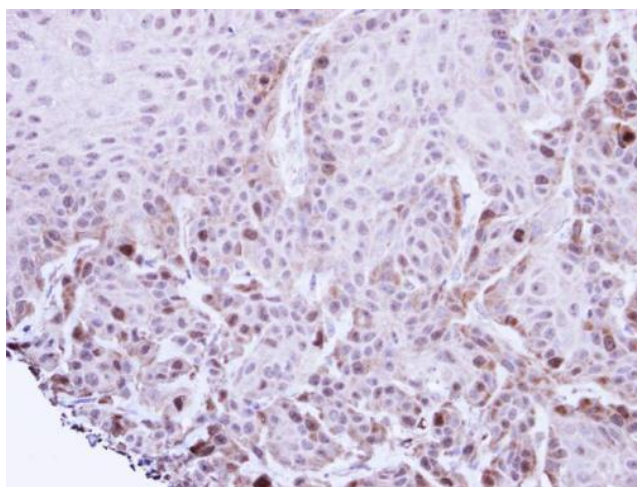
[View online »](#)

Note: Seq homology of immunogen across species: Mouse (100%), Rat (100%)

Product images:



TACC2 antibody detects TACC2 protein by western blot analysis. A. 30 ug 293T whole cell extract. B. 30 ug A431 whole cell extract. C. 30 ug H1299 whole cell extract. D. 30 ug HeLa whole cell extract. E. 30 ug HepG2 whole cell extract. F. 30 ug Molt-4 whole cell extract. G. 30 ug Molt-4 whole cell extract.



Immunohistochemical analysis of paraffin-embedded Cal27 xenograft, using TACC2 (TA308458) antibody at 1:100 dilution.