

## Product datasheet for **TA308455**

### TJP1 Rabbit Polyclonal Antibody

#### Product data:

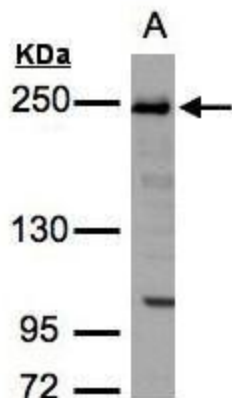
|                         |  |
|-------------------------|--|
| Product Type:           | Primary Antibodies   |
| Applications:           | IF, IHC, WB  |
| Recommended Dilution:   | ICC/IF:1:100-1:1000; IHC:1:100-1:1000; WB:1:500-1:3000   |
| Reactivity:             | Human  |
| Host:                   | Rabbit   |
| Isotype:                | IgG  |
| Clonality:              | Polyclonal   |
| Immunogen:              | Recombinant fragment corresponding to a region within amino acids 1 and 296 of ZO-1 (Uniprot ID#Q07157)  |
| Formulation:            | 1XPBS, 20% Glycerol (pH7). 0.025% ProClin 300 was added as a preservative.   |
| Concentration:          | lot specific   |
| Purification:           | Purified by antigen-affinity chromatography.   |
| Conjugation:            | Unconjugated   |
| Storage:                | Store at -20°C as received.  |
| Stability:              | Stable for 12 months from date of receipt.   |
| Predicted Protein Size: | 187 kDa  |
| Gene Name:              | tight junction protein 1   |
| Database Link:          | <a href="#">NP_003248</a><br><a href="#">Entrez Gene 7082 Human Q07157</a>   |
| Background:             | This gene encodes a protein located on a cytoplasmic membrane surface of intercellular tight junctions. The encoded protein may be involved in signal transduction at cell-cell junctions. Two transcript variants encoding distinct isoforms have been identified for this gene. [provided by RefSeq] |
| Synonyms:               | ZO-1   |
| Protein Families:       | Druggable Genome   |



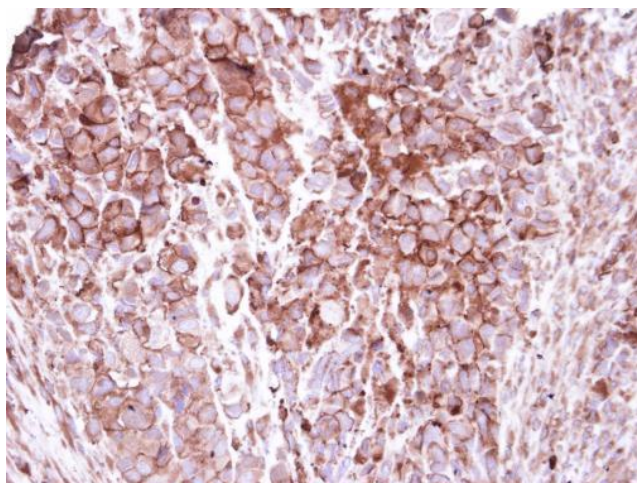
[View online »](#)

**Protein Pathways:** Adherens junction, Epithelial cell signaling in Helicobacter pylori infection, Gap junction, Tight junction, Vibrio cholerae infection

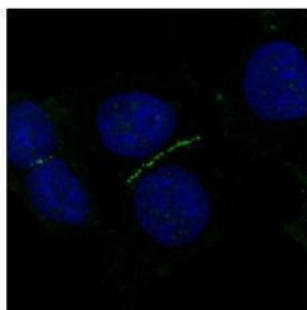
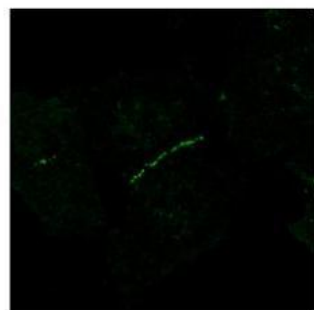
**Product images:**



Sample (30 ug whole cell lysate). A:H1299. 5% SDS PAGE. TA308455 diluted at 1:3000



Immunohistochemical analysis of paraffin-embedded H661 xenograft, using ZO-1 (TA308455) antibody at 1:250 dilution.



ZO-1 antibody [N1N2], N-term detects TJP1 protein at junction by confocal immunofluorescent analysis. Sample: A431 cells were fixed in 4% paraformaldehyde at RT for 15 min. Green: TJP1 protein stained by ZO-1 antibody [N1N2], N-term (TA308455) diluted at