

Product datasheet for **TA308453**

Pyruvate Kinase (PKLR) Rabbit Polyclonal Antibody

Product data:

Product Type:	Primary Antibodies
Applications:	IF, IHC, WB
Recommended Dilution:	ICC/IF:1:100-1:1000; IHC:1:100-1:1000; WB:1:1000-1:10000
Reactivity:	Human
Host:	Rabbit
Isotype:	IgG
Clonality:	Polyclonal
Immunogen:	Recombinant fragment corresponding to a region within amino acids 1 and 260 of Pyruvate Kinase (liver/RBC) (Uniprot ID#P30613)
Formulation:	0.1M Tris, 0.1M Glycine, 10% Glycerol (pH7). 0.01% Thimerosal was added as a preservative.
Concentration:	lot specific
Purification:	Purified by antigen-affinity chromatography.
Conjugation:	Unconjugated
Storage:	Store at -20°C as received.
Stability:	Stable for 12 months from date of receipt.
Predicted Protein Size:	62 kDa
Gene Name:	pyruvate kinase, liver and RBC
Database Link:	NP_870986 Entrez Gene 5313 Human P30613
Background:	The protein encoded by this gene is a pyruvate kinase that catalyzes the transphosphorylation of phosphoenolpyruvate into pyruvate and ATP, which is the rate-limiting step of glycolysis. Defects in this enzyme, due to gene mutations or genetic variations, are the common cause of chronic hereditary nonspherocytic hemolytic anemia (CNSHA or HNSHA). Multiple transcript variants encoding different isoforms have been found for this gene. [provided by RefSeq]
Synonyms:	PK1; PKL; PKR; PKRL; RPK

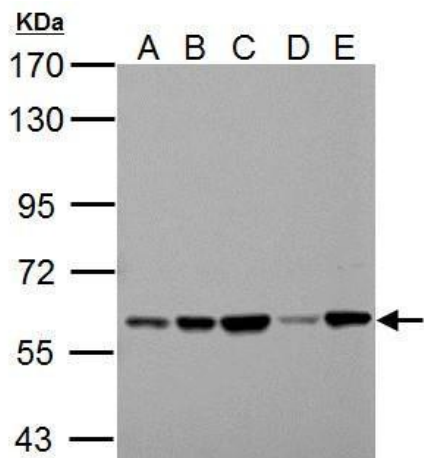


[View online »](#)

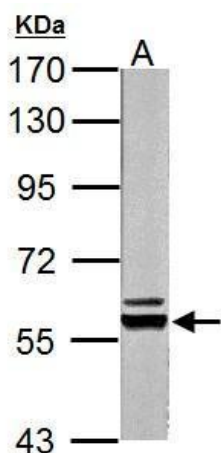
Protein Families: Druggable Genome

Protein Pathways: Glycolysis / Gluconeogenesis, Insulin signaling pathway, Maturity onset diabetes of the young, Metabolic pathways, Purine metabolism, Pyruvate metabolism, Type II diabetes mellitus

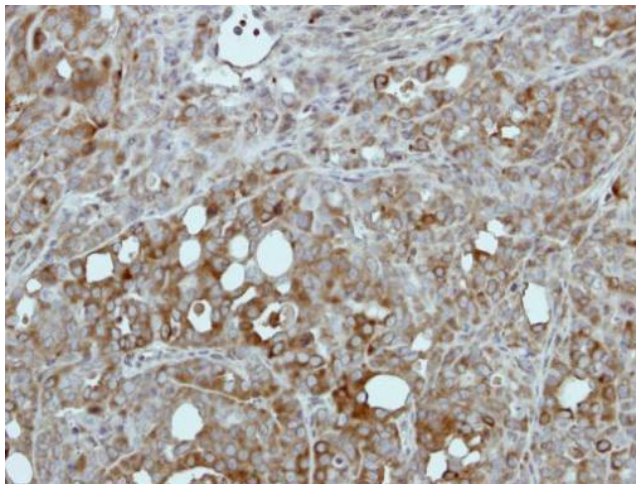
Product images:



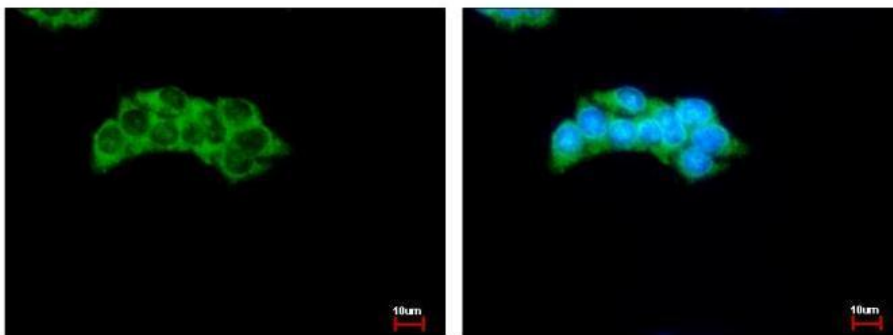
Sample (30 ug of whole cell lysate) A: 293T. B: A431. C: HeLa. D: HepG2. E: A375. 7.5% SDS PAGE. TA308453 diluted at 1:1000.



Pyruvate Kinase (liver/RBC) antibody detects Pyruvate Kinase (liver/RBC) protein by Western blot analysis. A. 20 ug Rat liver lysate/extract. 7.5% SDS-PAGE. Pyruvate Kinase (liver/RBC) antibody (TA308453) dilution: 1:10000.



Immunohistochemical analysis of paraffin-embedded NCIN87 xenograft, using Pyruvate Kinase (liver/RBC) (TA308453) antibody at 1:500 dilution.



Pyruvate Kinase (liver/RBC) antibody detects PKLR protein at Cytoplasm by immunofluorescent analysis. Sample: HepG2 cells were fixed in -20°C 100% MeOH for 5 min. Green: PKLR protein stained by Pyruvate Kinase (liver/RBC) antibody (TA308453) diluted at 1: