

Product datasheet for **TA308452**

HHIP Rabbit Polyclonal Antibody

Product data:

| | |
|-------------------------|--|
| Product Type: | Primary Antibodies |
| Applications: | IF, IHC, WB |
| Recommended Dilution: | IHC:1:100-1:1000; WB:1:500-1:3000 |
| Reactivity: | Human, Mouse (Predicted: Rhesus Monkey) |
| Host: | Rabbit |
| Isotype: | IgG |
| Clonality: | Polyclonal |
| Immunogen: | Recombinant fragment corresponding to a region within amino acids 263 and 554 of HHIP (Uniprot ID#Q96QV1) |
| Formulation: | 1XPBS, 20% Glycerol (pH7). 0.025% ProClin 300 was added as a preservative. |
| Concentration: | lot specific |
| Purification: | Purified by antigen-affinity chromatography. |
| Conjugation: | Unconjugated |
| Storage: | Store at -20°C as received. |
| Stability: | Stable for 12 months from date of receipt. |
| Predicted Protein Size: | 79 kDa |
| Gene Name: | hedgehog interacting protein |
| Database Link: | NP_071920 Entrez Gene 15245 Mouse Entrez Gene 64399 Human Q96QV1 |
| Background: | This gene encodes a protein similar to the mouse hedgehog-interacting protein, a regulatory component of the hedgehog signalling pathway. Members of the hedgehog family are evolutionarily conserved proteins which are involved in many fundamental processes in embryonic development, including anteroposterior patterns of limbs and regulation of left-right asymmetry. [provided by RefSeq] |
| Synonyms: | HIP |
| Note: | Seq homology of immunogen across species: Rhesus Monkey (100%) |

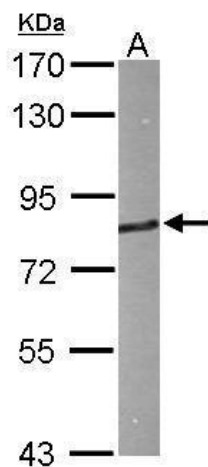


[View online »](#)

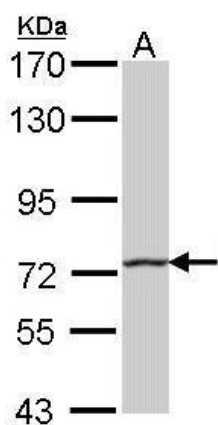
Protein Families: Secreted Protein

Protein Pathways: Basal cell carcinoma, Hedgehog signaling pathway, Pathways in cancer

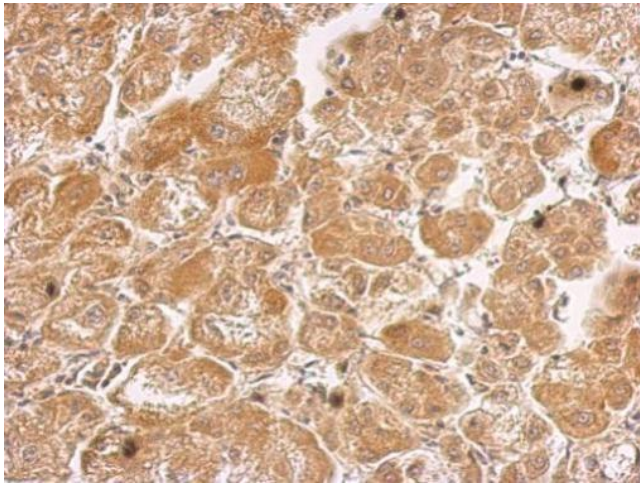
Product images:



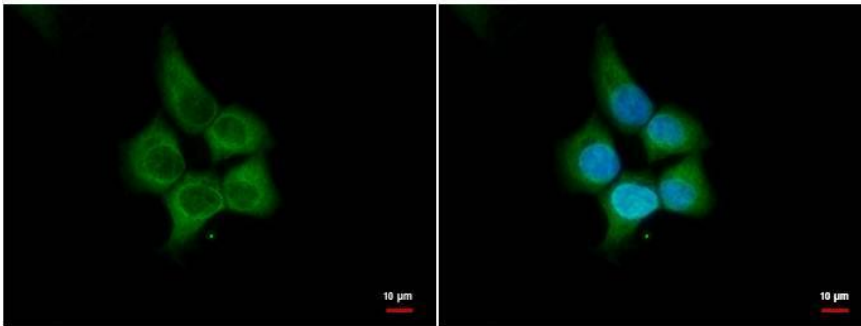
Sample (50 ug of whole cell lysate). A: Mouse brain. 7.5% SDS PAGE. TA308452 diluted at 1:1000.



Sample (30 ug of whole cell lysate). A: A431. 7.5% SDS PAGE. TA308452 diluted at 1:1000.



HHIP antibody [N3C2], Internal detects HHIP protein at cytosol on hepatoma by immunohistochemical analysis. Sample: Paraffin-embedded hepatoma. HHIP antibody [N3C2], Internal (TA308452) dilution: 1:500.



HHIP antibody [N3C2], Internal antibody detects HHIP protein by immunofluorescent analysis. Sample: A431 cells were fixed in 4% paraformaldehyde for 15 min. Green: HHIP protein stained by HHIP antibody [N3C2], Internal antibody (TA308452) diluted at 1:500