

Product datasheet for **TA308451**

TRIM32 Rabbit Polyclonal Antibody

Product data:

Product Type:	Primary Antibodies
Applications:	IF, WB
Recommended Dilution:	ICC/IF:1:100-1:1000; WB:1:500-1:20000
Reactivity:	Human (Predicted: Rhesus Monkey)
Host:	Rabbit
Isotype:	IgG
Clonality:	Polyclonal
Immunogen:	Recombinant fragment corresponding to a region within amino acids 1 and 289 of TRIM32 (Uniprot ID#Q13049)
Formulation:	1XPBS, 1% BSA, 20% Glycerol (pH7). 0.01% Thimerosal was added as a preservative.
Concentration:	lot specific
Purification:	Purified by antigen-affinity chromatography.
Conjugation:	Unconjugated
Storage:	Store at -20°C as received.
Stability:	Stable for 12 months from date of receipt.
Predicted Protein Size:	72 kDa
Gene Name:	tripartite motif containing 32
Database Link:	NP_001093149 Entrez Gene 22954 Human Q13049
Background:	The protein encoded by this gene is a member of the tripartite motif (TRIM) family. The TRIM motif includes three zinc-binding domains, a RING, a B-box type 1 and a B-box type 2, and a coiled-coil region. The protein localizes to cytoplasmic bodies. The protein has also been localized to the nucleus, where it interacts with the activation domain of the HIV-1 Tat protein. The Tat protein activates transcription of HIV-1 genes. [provided by RefSeq]
Synonyms:	BBS11; HT2A; LGMD2H; TATIP
Note:	Seq homology of immunogen across species: Rhesus Monkey (100%)

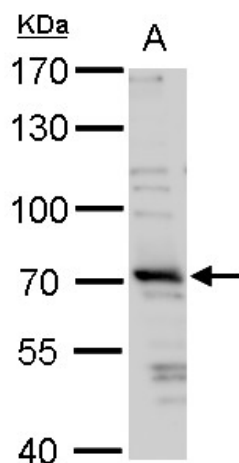


[View online »](#)

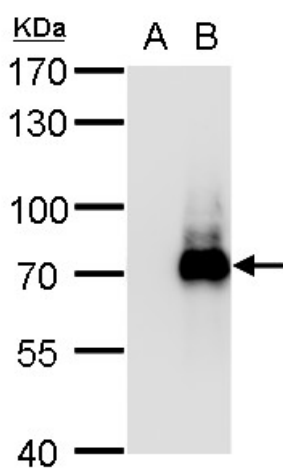
Protein Families: Transcription Factors

Protein Pathways: Ubiquitin mediated proteolysis

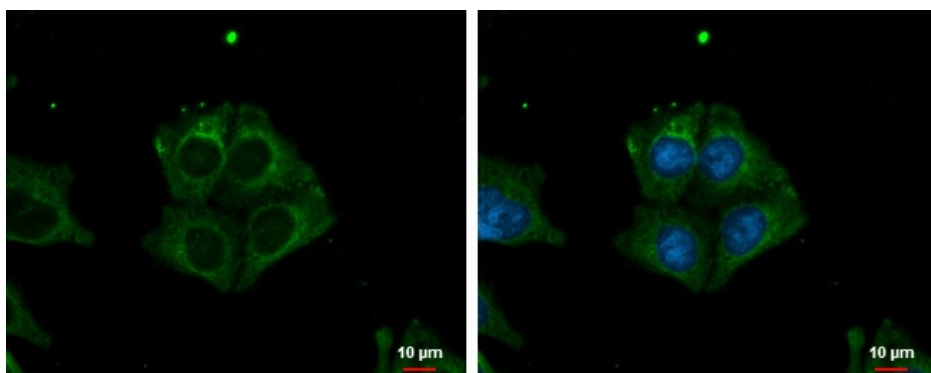
Product images:



TRIM32 antibody detects TRIM32 protein by western blot analysis. A. 30 ug 293T whole cell lysate/extract. 7.5 % SDS-PAGE. TRIM32 antibody (TA308451) dilution: 1:1000



TRIM32 antibody detects TRIM32 protein by western blot analysis. A. 5 ug 293T whole cell lysate/extract. B. 5 ug whole cell lysate/extract of DDDDk-human TRIM32-transfected 293T cells. 7.5 % SDS-PAGE. TRIM32 antibody (TA308451) dilution: 1:20000



TRIM32 antibody detects TRIM32 protein at cytoplasm by immunofluorescent analysis. Sample: A375 cells were fixed in ice-cold MeOH for 5 min. Green: TRIM32 protein stained by TRIM32 antibody (TA308451) diluted at 1:500. Blue: Hoechst 33342 staining. Scale