

Product datasheet for **TA308450**

PARP3 Rabbit Polyclonal Antibody

Product data:

Product Type:	Primary Antibodies
Applications:	IF, IHC, WB
Recommended Dilution:	ICC/IF:1:100-1:1000; IHC:1:100-1:1000; WB:1:500-1:3000
Reactivity:	Human, Mouse
Host:	Rabbit
Isotype:	IgG
Clonality:	Polyclonal
Immunogen:	Recombinant fragment corresponding to a region within amino acids 63 and 370 of PARP3 (Uniprot ID#Q9Y6F1)
Formulation:	0.1M Tris, 0.1M Glycine, 10% Glycerol (pH7). 0.01% Thimerosal was added as a preservative.
Concentration:	lot specific
Purification:	Purified by antigen-affinity chromatography.
Conjugation:	Unconjugated
Storage:	Store at -20°C as received.
Stability:	Stable for 12 months from date of receipt.
Predicted Protein Size:	60 kDa
Gene Name:	poly(ADP-ribose) polymerase family member 3
Database Link:	NP_001003931 Entrez Gene 235587 Mouse Entrez Gene 10039 Human Q9Y6F1
Background:	The protein encoded by this gene belongs to the PARP family. These enzymes modify nuclear proteins by poly-ADP-ribosylation, which is required for DNA repair, regulation of apoptosis, and maintenance of genomic stability. This gene encodes the poly(ADP-ribosyl)transferase 3, which is preferentially localized to the daughter centriole throughout the cell cycle. Alternatively spliced transcript variants encoding different isoforms have been identified. [provided by RefSeq]
Synonyms:	ADPRT3; ADPRTL2; ADPRTL3; ARTD3; IRT1; PADPRT-3

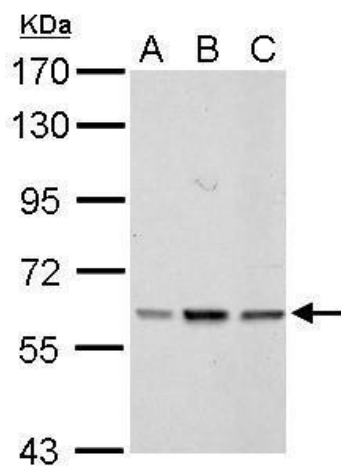


[View online »](#)

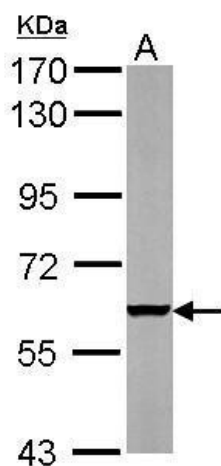
Protein Families: Druggable Genome

Protein Pathways: Base excision repair

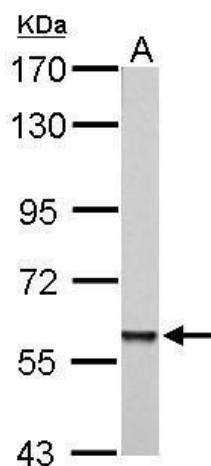
Product images:



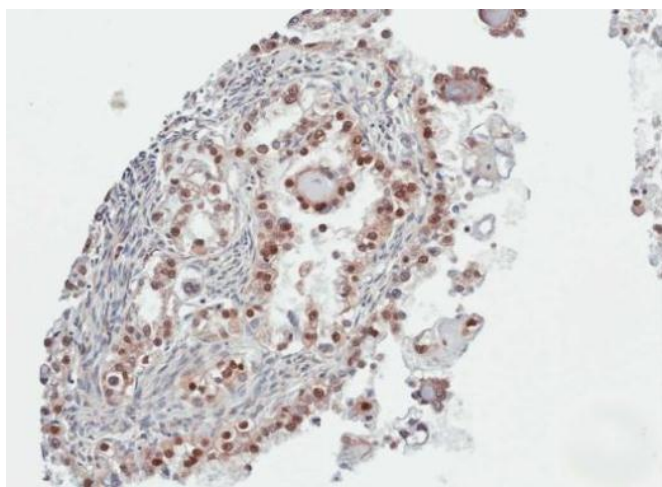
PARP3 antibody detects PARP3 protein by Western blot analysis. A. 30 ug A431 whole cell lysate/extract. B. 30 ug HeLa whole cell lysate/extract. C. 30 ug A375 whole cell lysate/extract. 7.5 % SDS-PAGE. PARP3 antibody (TA308450) dilution: 1:1000



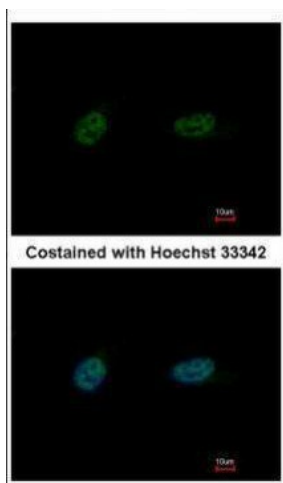
Sample (50 ug of whole cell lysate). A: mouse heart. 7.5% SDS PAGE. TA308450 diluted at 1:1000.



PARP3 antibody detects PARP3 protein by Western blot analysis. A. 30 ug PC-12 whole cell lysate/extract. 7.5 % SDS-PAGE. PARP3 antibody (TA308450) dilution: 1:1000



Immunohistochemical analysis of paraffin-embedded OVCA, using PARP3 (TA308450) antibody at 1:100 dilution.



Immunofluorescence analysis of paraformaldehyde-fixed HeLa, using PARP3 (TA308450) antibody at 1:500 dilution.