

Product datasheet for **TA308448**

PON2 Rabbit Polyclonal Antibody

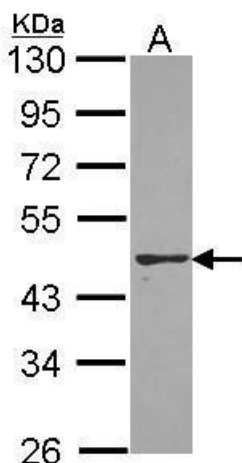
Product data:

Product Type:	Primary Antibodies
Applications:	IHC, WB
Recommended Dilution:	IHC:1:100-1:1000; WB:1:500-1:3000
Reactivity:	Human, Mouse (Predicted: Dog, Pig, Rat, Bovine)
Host:	Rabbit
Isotype:	IgG
Clonality:	Polyclonal
Immunogen:	Recombinant fragment corresponding to a region within amino acids 1 and 295 of PON2 (Uniprot ID#Q15165)
Formulation:	0.1M Tris, 0.1M Glycine, 10% Glycerol (pH7). 0.01% Thimerosal was added as a preservative.
Concentration:	lot specific
Purification:	Purified by antigen-affinity chromatography.
Conjugation:	Unconjugated
Storage:	Store at -20°C as received.
Stability:	Stable for 12 months from date of receipt.
Predicted Protein Size:	39 kDa
Gene Name:	paraoxonase 2
Database Link:	NP_001018171 Entrez Gene 296851 RatEntrez Gene 330260 MouseEntrez Gene 403855 DogEntrez Gene 5445 Human Q15165

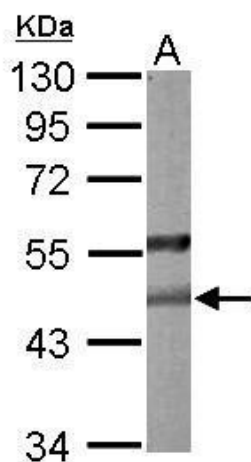


[View online »](#)

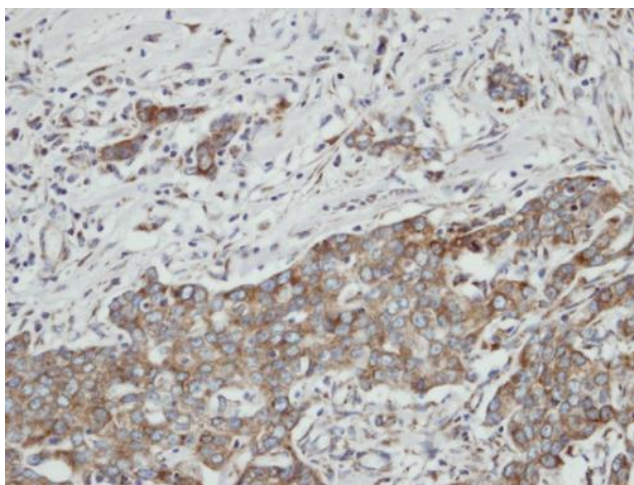
Background:	This gene encodes a member of the paraoxonase gene family, which includes three known members located adjacent to each other on the long arm of chromosome 7. The encoded protein is ubiquitously expressed in human tissues, membrane-bound, and may act as a cellular antioxidant, protecting cells from oxidative stress. Hydrolytic activity against acylhomoserine lactones, important bacterial quorum-sensing mediators, suggests the encoded protein may also play a role in defense responses to pathogenic bacteria. Mutations in this gene may be associated with vascular disease and a number of quantitative phenotypes related to diabetes. Alternatively spliced transcript variants encoding different isoforms have been described. [provided by RefSeq]
Synonyms:	A-esterase 2; aromatic esterase 2; arylesterase 2; paraoxonase 2; paraoxonase nirs; serum arylalkylphosphatase 2; serum paraoxonase
Note:	Seq homology of immunogen across species: Dog (92%), Pig (93%), Rat (90%), Bovine (92%)
Protein Families:	Druggable Genome
Protein Pathways:	Metabolic pathways

Product images:

Sample (30 ug of whole cell lysate). A: A431. 10% SDS PAGE. PON2 antibody, TA308448 diluted at 1:1000.



Sample (50 ug of whole cell lysate). A: mouse liver. 10% SDS PAGE. TA308448 diluted at 1:1000.



Immunohistochemical analysis of paraffin-embedded N87 xenograft, using PON2 (TA308448) antibody at 1:100 dilution.