

## Product datasheet for **TA308447**

### VPAC2 (VIPR2) Rabbit Polyclonal Antibody

#### Product data:

Product Type:	Primary Antibodies
Applications:	WB
Recommended Dilution:	WB:1:500-1:3000
Reactivity:	Human (Predicted: Zebrafish, Chicken, X. tropicalis)
Host:	Rabbit
Isotype:	IgG
Clonality:	Polyclonal
Immunogen:	Synthetic peptide corresponding to a region within amino acids 334 and 423 of VPAC2
Formulation:	1XPBS, 20% Glycerol (pH7). 0.01% Thimerosal was added as a preservative.
Concentration:	lot specific
Purification:	Purified by antigen-affinity chromatography.
Conjugation:	Unconjugated
Storage:	Store at -20°C as received.
Stability:	Stable for 12 months from date of receipt.
Predicted Protein Size:	49 kDa
Gene Name:	vasoactive intestinal peptide receptor 2
Database Link:	<a href="#">NP_003373</a> <a href="#">Entrez Gene 7434 Human P41587</a>
Background:	Vasoactive intestinal peptide (VIP; MIM 192320) and pituitary adenylate cyclase activating polypeptide (PACAP; MIM 102980) are homologous peptides that function as neurotransmitters and neuroendocrine hormones. While the receptors for VIP and PACAP share homology, they differ in their substrate specificities and expression patterns. See VIPR1 (MIM 192321) and ADCYAP1R1(MIM 102981). [supplied by OMIM]
Synonyms:	C16DUPq36.3; DUP7q36.3; PACAP-R-3; PACAP-R3; VIP-R-2; VPAC2; VPAC2R; VPCAP2R
Note:	Seq homology of immunogen across species: Zebrafish (100%), Xenopus Tropicalis (100%), Chicken (100%)

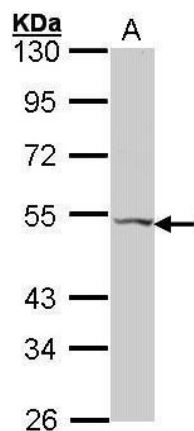


[View online »](#)

Protein Families: Druggable Genome, GPCR, Transmembrane

Protein Pathways: Neuroactive ligand-receptor interaction

### Product images:



Sample (30 ug of whole cell lysate). A: HeLa. 10% SDS PAGE. TA308447 diluted at 1:1000.