

## Product datasheet for **TA308446**

### DPP8 Rabbit Polyclonal Antibody

#### Product data:

Product Type:	Primary Antibodies
Applications:	WB
Recommended Dilution:	WB:1:500-1:3000
Reactivity:	Human, Mouse (Predicted: Rat, Bovine)
Host:	Rabbit
Isotype:	IgG
Clonality:	Polyclonal
Immunogen:	Recombinant fragment corresponding to a region within amino acids 349 and 662 of DPRP1 (Uniprot ID#Q6V1X1)
Formulation:	0.1M Tris, 0.1M Glycine, 10% Glycerol (pH7). 0.01% Thimerosal was added as a preservative.
Concentration:	lot specific
Purification:	Purified by antigen-affinity chromatography.
Conjugation:	Unconjugated
Storage:	Store at -20°C as received.
Stability:	Stable for 12 months from date of receipt.
Predicted Protein Size:	103 kDa
Gene Name:	dipeptidyl peptidase 8
Database Link:	<a href="#">NP_932064</a> <a href="#">Entrez Gene 74388 MouseEntrez Gene 315758 RatEntrez Gene 54878 Human Q6V1X1</a>
Background:	This gene encodes a member of the peptidase S9B family, a small family of dipeptidyl peptidases that are able to cleave peptide substrates at a prolyl bond. The encoded protein shares similarity with dipeptidyl peptidase IV in that it is ubiquitously expressed, and hydrolyzes the same substrates. These similarities suggest that, like dipeptidyl peptidase IV, this protein may play a role in T-cell activation and immune function. Alternatively spliced transcript variants encoding different isoforms have been described. [provided by RefSeq]
Synonyms:	DP8; DPRP1; MSTP141

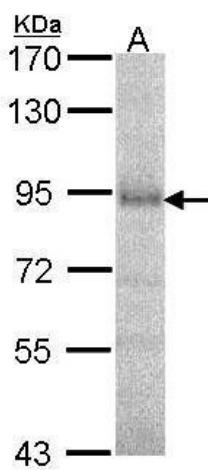


[View online »](#)

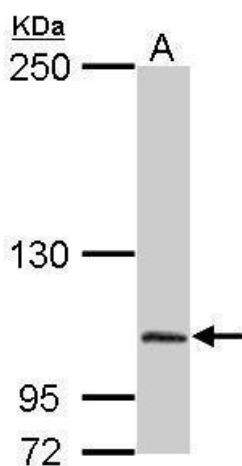
**Note:** Seq homology of immunogen across species: Rat (86%), Bovine (96%)

**Protein Families:** Druggable Genome, Protease, Transmembrane

**Product images:**



Sample (30 ug of whole cell lysate). A: A549. 7.5% SDS PAGE. TA308446 diluted at 1:1000.



Sample (50 ug of whole cell lysate). A: Mouse brain. 5% SDS PAGE. TA308446 diluted at 1:2000.