

Product datasheet for **TA308444**

Alpha 2 Antiplasmin (SERPINF2) Rabbit Polyclonal Antibody

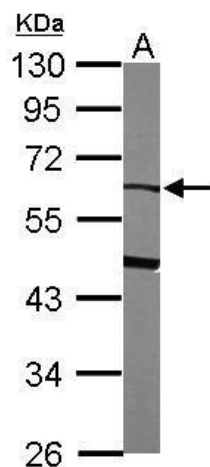
Product data:

Product Type:	Primary Antibodies
Applications:	IF, IHC, WB
Recommended Dilution:	ICC/IF:1:100-1:1000; IHC:1:100-1:1000; WB:1:500-1:3000
Reactivity:	Human, Mouse (Predicted: Rabbit, Bovine)
Host:	Rabbit
Isotype:	IgG
Clonality:	Polyclonal
Immunogen:	Recombinant fragment corresponding to a region within amino acids 188 and 453 of alpha 2 Antiplasmin (Uniprot ID#P08697)
Formulation:	0.1M Tris, 0.1M Glycine, 10% Glycerol (pH7). 0.01% Thimerosal was added as a preservative.
Concentration:	lot specific
Purification:	Purified by antigen-affinity chromatography.
Conjugation:	Unconjugated
Storage:	Store at -20°C as received.
Stability:	Stable for 12 months from date of receipt.
Predicted Protein Size:	55 kDa
Gene Name:	serpin family F member 2
Database Link:	NP_000925 Entrez Gene 18816 Mouse Entrez Gene 5345 Human P08697
Synonyms:	A2AP; AAP; ALPHA-2-PI; API; PLI
Note:	Seq homology of immunogen across species: Rabbit (86%), Bovine (83%)
Protein Families:	Druggable Genome, Secreted Protein
Protein Pathways:	Complement and coagulation cascades

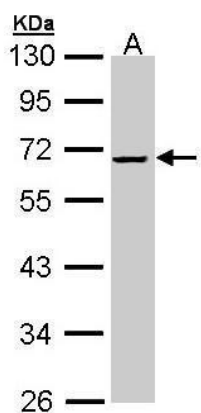


[View online »](#)

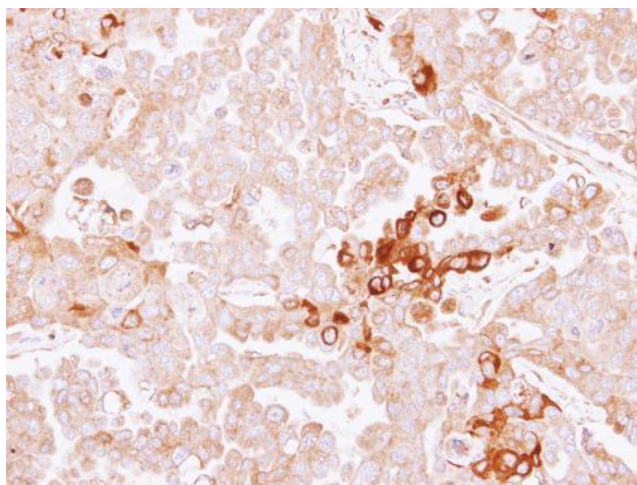
Product images:



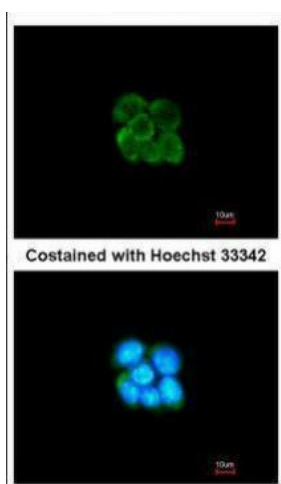
Sample (50 ug of whole cell lysate). A: mouse liver. 10% SDS PAGE. TA308444 diluted at 1:1000.



Sample (30 ug of whole cell lysate). A: HeLa. 10% SDS PAGE. TA308444 diluted at 1:1000



Immunohistochemical analysis of paraffin-embedded OVCAR3 xenograft, using alpha 2 Antiplasmin (TA308444) antibody at 1:500 dilution.



Immunofluorescence analysis of methanol-fixed A431, using SERPINF2 (TA308444) antibody at 1:200 dilution.