

Product datasheet for **TA308442**

BCL2L10 Rabbit Polyclonal Antibody

Product data:

Product Type:	Primary Antibodies
Applications:	IF, IHC, WB
Recommended Dilution:	ICC/IF:1:100-1:1000; IHC:1:100-1:1000; WB:1:500-1:3000
Reactivity:	Human
Host:	Rabbit
Isotype:	IgG
Clonality:	Polyclonal
Immunogen:	Synthetic peptide corresponding to a region within amino acids 60 and 153 of BCL2L10 (Uniprot ID#Q9HD36)
Formulation:	1XPBS, 20% Glycerol (pH7). 0.025% ProClin 300 was added as a preservative.
Concentration:	lot specific
Purification:	Purified by antigen-affinity chromatography.
Conjugation:	Unconjugated
Storage:	Store at -20°C as received.
Stability:	Stable for 12 months from date of receipt.
Predicted Protein Size:	23 kDa
Gene Name:	BCL2 like 10
Database Link:	NP_065129 Entrez Gene 10017 Human Q9HD36



[View online »](#)

Background:

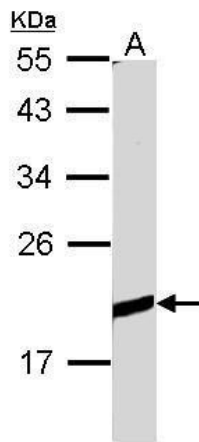
The protein encoded by this gene belongs to the BCL-2 protein family. BCL-2 family members form hetero- or homodimers and act as anti- or pro-apoptotic regulators that are involved in a wide variety of cellular activities. The protein encoded by this gene contains conserved BH4, BH1 and BH2 domains. This protein can interact with other members of BCL-2 protein family including BCL2, BCL2L1/BCL-X(L), and BAX. Overexpression of this gene has been shown to suppress cell apoptosis possibly through the prevention of cytochrome C release from the mitochondria, and thus activating caspase-3 activation. The mouse counterpart of this protein is found to interact with Apaf1 and forms a protein complex with Caspase 9, which suggests the involvement of this protein in APAF1 and CASPASE 9 related apoptotic pathway. [provided by RefSeq]

Synonyms:

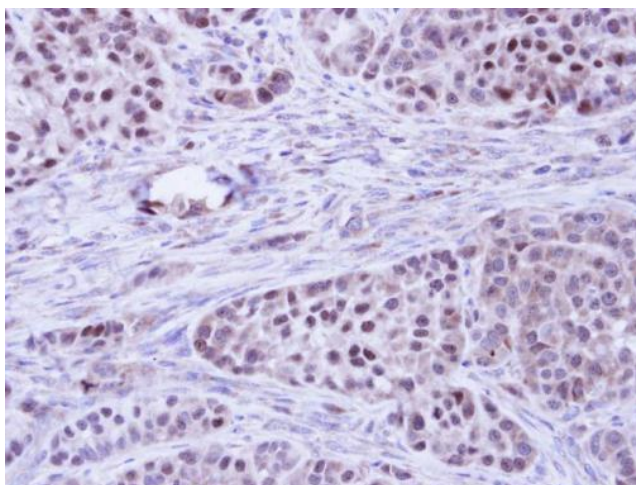
BCL-B; Boo; Diva

Protein Families:

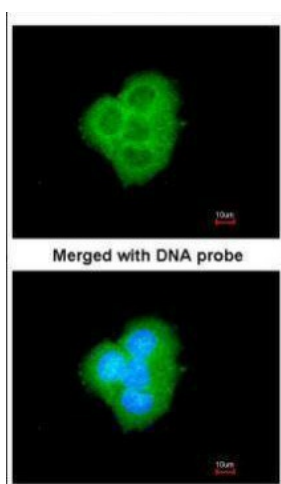
Druggable Genome, Transmembrane

Product images:

Sample (30 ug of whole cell lysate). A: Raji. 12% SDS PAGE. TA308442 diluted at 1:1000.



Immunohistochemical analysis of paraffin-embedded A549 Xenograft, using BCL2L10 (TA308442) antibody at 1:100 dilution.



Immunofluorescence analysis of paraformaldehyde-fixed A431, using BCL2L10 (TA308442) antibody at 1:200 dilution.