

## Product datasheet for **TA308440**

### **PPEF1 Rabbit Polyclonal Antibody**

#### **Product data:**

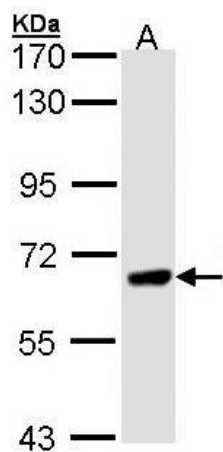
Product Type:	Primary Antibodies
Applications:	WB
Recommended Dilution:	WB:1:500-1:3000
Reactivity:	Human
Host:	Rabbit
Isotype:	IgG
Clonality:	Polyclonal
Immunogen:	Recombinant fragment corresponding to a region within amino acids 1 and 201 of PPEF-1 (Uniprot ID#O14829)
Formulation:	1XPBS, 10% Glycerol (pH7). 0.01% Thimerosal was added as a preservative.
Concentration:	lot specific
Purification:	Purified by antigen-affinity chromatography.
Conjugation:	Unconjugated
Storage:	Store at -20°C as received.
Stability:	Stable for 12 months from date of receipt.
Predicted Protein Size:	76 kDa
Gene Name:	protein phosphatase with EF-hand domain 1
Database Link:	<a href="#">NP_689412</a> <a href="#">Entrez Gene 5475 Human</a> <a href="#">O14829</a>
Background:	This gene encodes a member of the serine/threonine protein phosphatase with EF-hand motif family. The protein contains a protein phosphatase catalytic domain, and at least two EF-hand calcium-binding motifs in its C terminus. Although its substrate(s) is unknown, the encoded protein has been suggested to play a role in specific sensory neuron function and/or development. This gene shares high sequence similarity with the Drosophila retinal degeneration C (rdgC) gene. Several alternatively spliced transcript variants, each encoding a distinct isoform, have been described. [provided by RefSeq]
Synonyms:	PP7; PPEF; PPP7C; PPP7CA



[View online »](#)

Protein Families: Druggable Genome, Phosphatase

**Product images:**



Sample (30 ug of whole cell lysate). A: H1299.  
7.5% SDS PAGE. TA308440 diluted at 1:1000