

## Product datasheet for **TA308439**

### PPP3CB Rabbit Polyclonal Antibody

#### Product data:

Product Type:	Primary Antibodies
Applications:	IHC, WB
Recommended Dilution:	IHC:1:100-1:1000; WB:1:1000-1:10000
Reactivity:	Human, Mouse (Predicted: Chicken, Rabbit, Rat, Xenopus, Bovine, X. tropicalis)
Host:	Rabbit
Isotype:	IgG
Clonality:	Polyclonal
Immunogen:	Recombinant fragment corresponding to a region within amino acids 1 and 228 of PPP3CB (Uniprot ID#P16298)
Formulation:	0.1M Tris, 0.1M Glycine, 10% Glycerol (pH7). 0.01% Thimerosal was added as a preservative.
Concentration:	lot specific
Purification:	Purified by antigen-affinity chromatography.
Conjugation:	Unconjugated
Storage:	Store at -20°C as received.
Stability:	Stable for 12 months from date of receipt.
Predicted Protein Size:	59 kDa
Gene Name:	protein phosphatase 3 catalytic subunit beta
Database Link:	<a href="#">NP_001135826</a> <a href="#">Entrez Gene 19056 Mouse</a> <a href="#">Entrez Gene 24675 Rat</a> <a href="#">Entrez Gene 5532 Human</a> <a href="#">P16298</a>
Synonyms:	CALNA2; CALNB; CNA2; PP2Bbeta
Note:	Seq homology of immunogen across species: Chicken (96%), Rabbit (99%), Rat (99%), Xenopus laevis (83%), Bovine (99%), Xenopus tropicalis (83%)
Protein Families:	Druggable Genome, Phosphatase, Transcription Factors

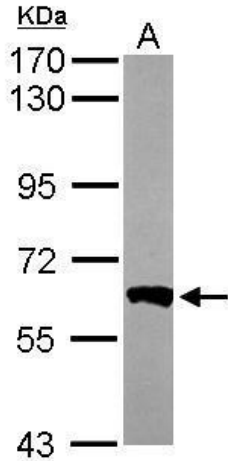


[View online »](#)

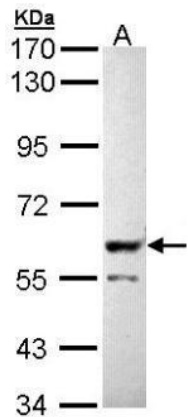
**Protein Pathways:**

Alzheimer's disease, Amyotrophic lateral sclerosis (ALS), Apoptosis, Axon guidance, B cell receptor signaling pathway, Calcium signaling pathway, Long-term potentiation, MAPK signaling pathway, Natural killer cell mediated cytotoxicity, Oocyte meiosis, T cell receptor signaling pathway, VEGF signaling pathway, Wnt signaling pathway

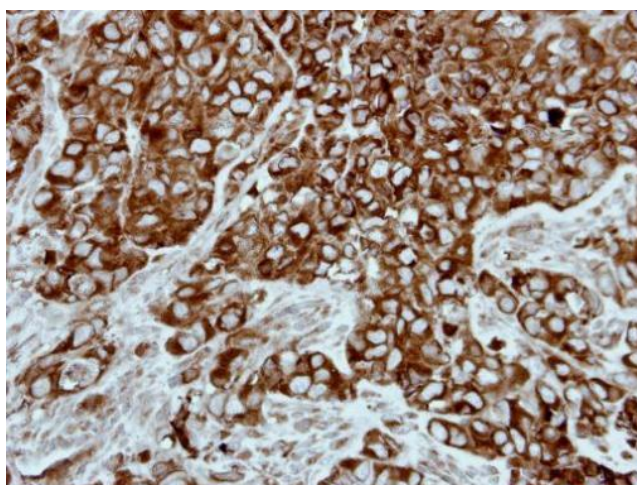
**Product images:**



Sample (50 ug of whole cell lysate). A: Mouse brain. 7.5% SDS PAGE. TA308439 diluted at 1:1000.



Sample (30 ug of whole cell lysate). A: Molt-4. 7.5% SDS PAGE. TA308439 diluted at 1:5000.



Immunohistochemical analysis of paraffin-embedded H661 xenograft, using PPP3CB (TA308439) antibody at 1:500 dilution.