

## Product datasheet for **TA308436**

### **RAMP2 Rabbit Polyclonal Antibody**

#### **Product data:**

<b>Product Type:</b>	Primary Antibodies
<b>Applications:</b>	IHC, WB
<b>Recommended Dilution:</b>	IHC:1:100-1:1000; WB:1:500-1:3000
<b>Reactivity:</b>	Human (Predicted: Mouse, Rat, Pig, Bovine)
<b>Host:</b>	Rabbit
<b>Isotype:</b>	IgG
<b>Clonality:</b>	Polyclonal
<b>Immunogen:</b>	Synthetic peptide corresponding to a region within amino acids 111 and 175 of RAMP2 (Uniprot ID#O60895)
<b>Formulation:</b>	0.1M Tris, 0.1M Glycine, 10% Glycerol (pH7). 0.01% Thimerosal was added as a preservative.
<b>Purification:</b>	Purified by antigen-affinity chromatography.
<b>Conjugation:</b>	Unconjugated
<b>Storage:</b>	Store at -20°C as received.
<b>Stability:</b>	Stable for 12 months from date of receipt.
<b>Predicted Protein Size:</b>	20 kDa
<b>Gene Name:</b>	receptor activity modifying protein 2
<b>Database Link:</b>	<a href="#">NP_005845</a> <a href="#">Entrez Gene 54409 Mouse</a> <a href="#">Entrez Gene 58966 Rat</a> <a href="#">Entrez Gene 10266 Human</a> <a href="#">O60895</a>



[View online »](#)

**Background:**

The protein encoded by this gene is a member of the RAMP family of single-transmembrane-domain proteins, called receptor (calcitonin) activity modifying proteins (RAMPs). RAMPs are type I transmembrane proteins with an extracellular N terminus and a cytoplasmic C terminus. RAMPs are required to transport calcitonin-receptor-like receptor (CRLR) to the plasma membrane. CRLR, a receptor with seven transmembrane domains, can function as either a calcitonin-gene-related peptide (CGRP) receptor or an adrenomedullin receptor, depending on which members of the RAMP family are expressed. In the presence of this (RAMP2) protein, CRLR functions as an adrenomedullin receptor. The RAMP2 protein is involved in core glycosylation and transportation of adrenomedullin receptor to the cell surface. [provided by RefSeq]

**Synonyms:**

RAMP2

**Note:**

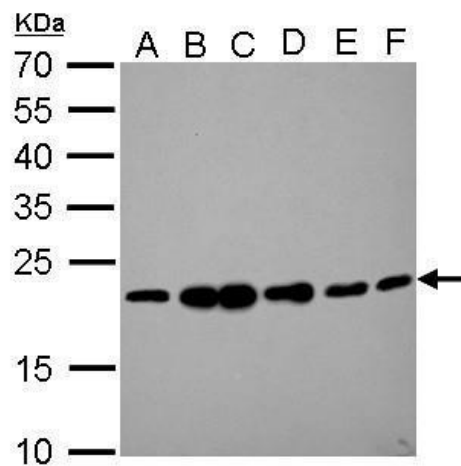
Seq homology of immunogen across species: Mouse (87%), Rat (80%), Pig (86%), Bovine (93%)

**Protein Families:**

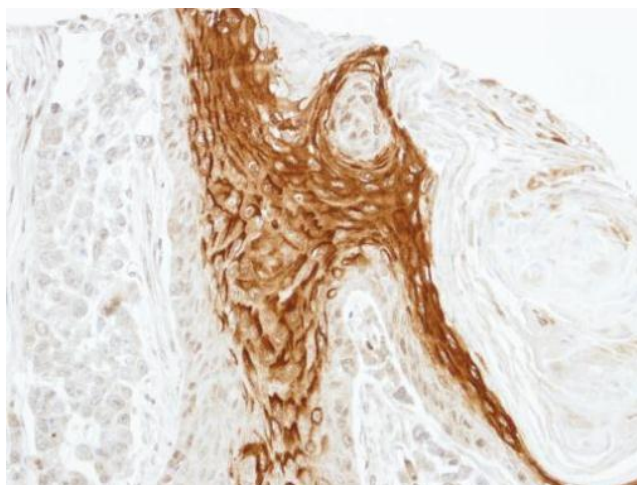
Druggable Genome, Transmembrane

**Protein Pathways:**

Vascular smooth muscle contraction

**Product images:**

RAMP2 antibody detects RAMP2 protein by Western blot analysis. A. 30 ug Jurkat whole cell lysate/extract. B. 30 ug Raji whole cell lysate/extract. C. 30 ug K562 whole cell lysate/extract. D. 30 ug THP-1 whole cell lysate/extract. E. 30 ug HL-60 whole cell



Immunohistochemical analysis of paraffin-embedded SG xenograft, using RAMP2 (TA308436) antibody at 1:100 dilution.