

Product datasheet for **TA308434**

RBM15 Rabbit Polyclonal Antibody

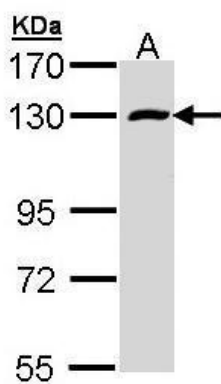
Product data:

Product Type:	Primary Antibodies
Applications:	IF, WB
Recommended Dilution:	ICC/IF:1:100-1:1000; WB:1:500-1:3000
Reactivity:	Human (Predicted: Mouse)
Host:	Rabbit
Isotype:	IgG
Clonality:	Polyclonal
Immunogen:	Recombinant fragment corresponding to a region within amino acids 146 and 425 of RBM15 (Uniprot ID#Q96T37)
Formulation:	1XPBS, 20% Glycerol (pH7). 0.025% ProClin 300 was added as a preservative.
Concentration:	lot specific
Purification:	Purified by antigen-affinity chromatography.
Conjugation:	Unconjugated
Storage:	Store at -20°C as received.
Stability:	Stable for 12 months from date of receipt.
Predicted Protein Size:	107 kDa
Gene Name:	RNA binding motif protein 15
Database Link:	NP_073605 Entrez Gene 229700 Mouse Entrez Gene 64783 Human Q96T37
Background:	Members of the SPEN (Split-end) family of proteins, including RBM15, have repressor function in several signaling pathways and may bind to RNA through interaction with spliceosome components (Hiriart et al., 2005 [PubMed 16129689]). [supplied by OMIM]
Synonyms:	OTT; OTT1; SPEN
Note:	Seq homology of immunogen across species: Mouse (95%)
Protein Families:	Transcription Factors

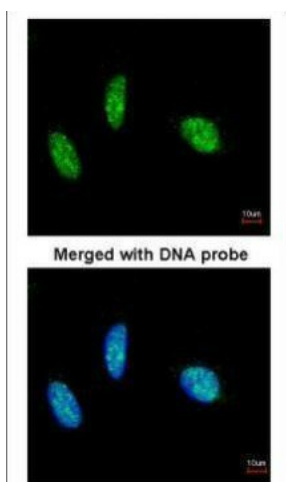


[View online »](#)

Product images:



Sample (30 ug of whole cell lysate). A: A431. 7.5% SDS PAGE. TA308434 diluted at 1:1000.



Immunofluorescence analysis of paraformaldehyde-fixed HeLa, using RBM15 (TA308434) antibody at 1:200 dilution.