

Product datasheet for **TA308433**

TST Rabbit Polyclonal Antibody

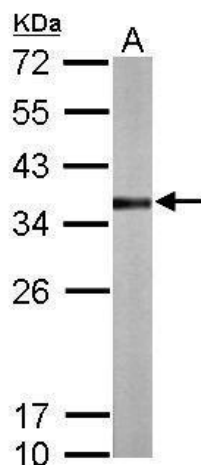
Product data:

Product Type:	Primary Antibodies
Applications:	IHC, WB
Recommended Dilution:	IHC:1:100-1:1000; WB:1:500-1:3000
Reactivity:	Human, Mouse
Host:	Rabbit
Isotype:	IgG
Clonality:	Polyclonal
Immunogen:	Recombinant fragment corresponding to a region within amino acids 1 and 270 of TST (Uniprot ID#Q16762)
Formulation:	0.1M Tris, 0.1M Glycine, 10% Glycerol (pH7). 0.01% Thimerosal was added as a preservative.
Concentration:	lot specific
Purification:	Purified by antigen-affinity chromatography.
Conjugation:	Unconjugated
Storage:	Store at -20°C as received.
Stability:	Stable for 12 months from date of receipt.
Predicted Protein Size:	33 kDa
Gene Name:	thiosulfate sulfurtransferase
Database Link:	NP_003303 Entrez Gene 22117 Mouse Entrez Gene 7263 Human Q16762
Background:	The product of this gene is a mitochondrial matrix enzyme that is encoded by the nucleus. It may play roles in cyanide detoxification, the formation of iron-sulfur proteins, and the modification of sulfur-containing enzymes. The gene product contains two highly conservative domains (rhodanese homology domains), suggesting these domains have a common evolutionary origin. [provided by RefSeq]
Synonyms:	RDS
Protein Families:	Druggable Genome

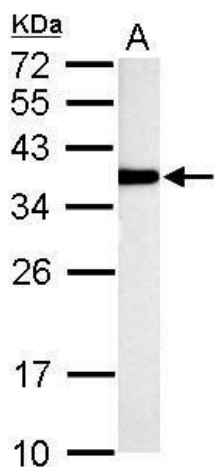


[View online »](#)

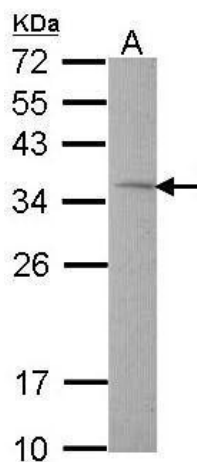
Product images:



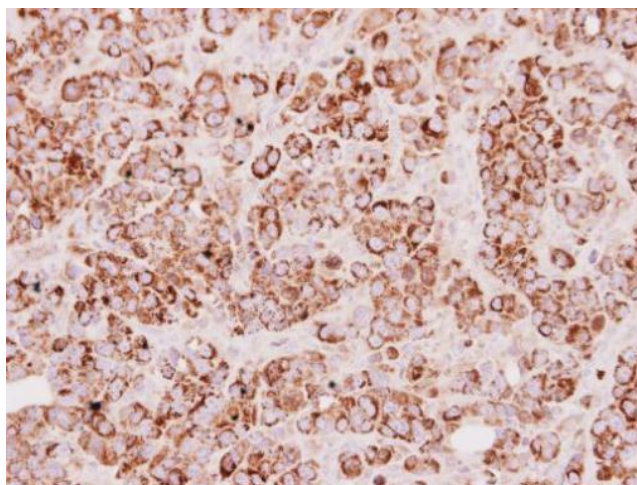
Sample (50 ug of whole cell lysate). A: Mouse liver. 12% SDS PAGE. TA308433 diluted at 1:1000.



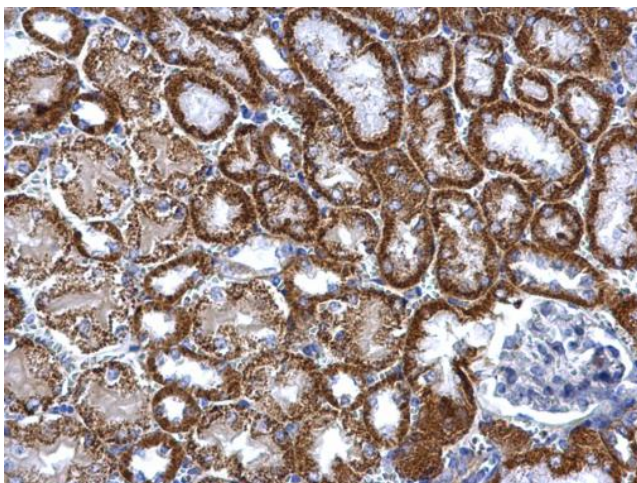
TST antibody detects TST protein by Western blot analysis. A. 50 ug rat liver lysate/extract. 12 % SDS-PAGE. TST antibody (TA308433) dilution: 1:1000



Sample (30 ug of whole cell lysate). A: Hep G2. 12% SDS PAGE. TA308433 diluted at 1:1000.



Immunohistochemical analysis of paraffin-embedded MCF7 xenograft, using TST (TA308433) antibody at 1:250 dilution.



TST antibody detects TST protein at mitochondria on mouse kidney by immunohistochemical analysis. Sample: Paraffin-embedded mouse kidney. TST antibody (TA308433) dilution: 1:500.