

Product datasheet for **TA308432**

Selenophosphate synthetase 1 (SEPHS1) Rabbit Polyclonal Antibody

Product data:

Product Type:	Primary Antibodies
Applications:	IF, IHC, WB
Recommended Dilution:	ICC/IF:1:100-1:1000; IHC:1:100-1:1000; WB:1:500-1:3000
Reactivity:	Human (Predicted: Rat, Chicken, Chimpanzee, Bovine, Rhesus Monkey)
Host:	Rabbit
Isotype:	IgG
Clonality:	Polyclonal
Immunogen:	Recombinant fragment corresponding to a region within amino acids 1 and 204 of Selenophosphate synthetase 1 (Uniprot ID#P49903)
Formulation:	0.1M Tris, 0.1M Glycine, 10% Glycerol (pH7). 0.01% Thimerosal was added as a preservative.
Concentration:	lot specific
Purification:	Purified by antigen-affinity chromatography.
Conjugation:	Unconjugated
Storage:	Store at -20°C as received.
Stability:	Stable for 12 months from date of receipt.
Predicted Protein Size:	43 kDa
Gene Name:	selenophosphate synthetase 1
Database Link:	NP_036379 Entrez Gene 291314 Rat Entrez Gene 22929 Human P49903
Background:	This protein encodes an enzyme that synthesizes selenophosphate from selenide and ATP. Selenophosphate is the selenium donor used to synthesize selenocysteine, which is co-translationally incorporated into selenoproteins at in-frame UGA codons. [provided by RefSeq]
Synonyms:	SELD; SPS; SPS1
Note:	Seq homology of immunogen across species: Rat (100%), Chicken (100%), Rhesus Monkey (100%), Chimpanzee (100%), Bovine (100%)

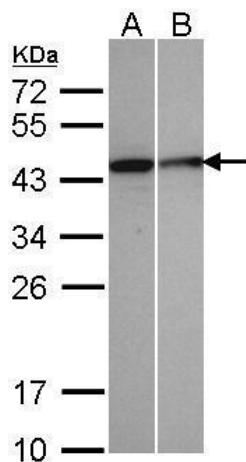


[View online »](#)

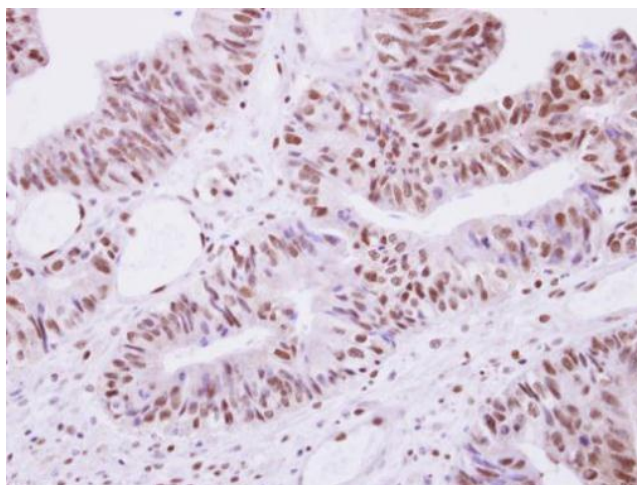
Protein Families: Stem cell - Pluripotency

Protein Pathways: Metabolic pathways, Selenoamino acid metabolism

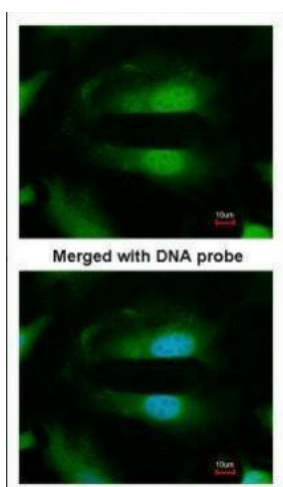
Product images:



Sample (30 ug of whole cell lysate). A:A431.
B:MOLT4. 12% SDS PAGE. TA308432 diluted at 1:500



Selenophosphate synthetase 1 antibody detects SEPHS1 protein at nucleus on Colon Carcinoma by immunohistochemical analysis. Sample: Paraffin-embedded Colon Carcinoma. Selenophosphate synthetase 1 antibody (TA308432) dilution: 1:500.



Immunofluorescence analysis of paraformaldehyde-fixed HeLa, using Selenophosphate synthetase 1 (TA308432) antibody at 1:200 dilution.