

## Product datasheet for **TA308431**

### Selenophosphate synthetase 2 (SEPHS2) Rabbit Polyclonal Antibody

#### Product data:

Product Type:	Primary Antibodies
Applications:	IF, WB
Recommended Dilution:	ICC/IF:1:100-1:1000; WB:1:500-1:3000
Reactivity:	Human (Predicted: Chimpanzee)
Host:	Rabbit
Isotype:	IgG
Clonality:	Polyclonal
Immunogen:	Recombinant fragment corresponding to a region within amino acids 186 and 448 of SEPHS2 (Uniprot ID#Q99611)
Formulation:	0.1M Tris, 0.1M Glycine, 10% Glycerol (pH7). 0.01% Thimerosal was added as a preservative.
Concentration:	lot specific
Purification:	Purified by antigen-affinity chromatography.
Conjugation:	Unconjugated
Storage:	Store at -20°C as received.
Stability:	Stable for 12 months from date of receipt.
Predicted Protein Size:	47 kDa
Gene Name:	selenophosphate synthetase 2
Database Link:	<a href="#">NP_036380</a> <a href="#">Entrez Gene 22928 Human</a> <a href="#">Q99611</a>

**Background:** This gene encodes an enzyme that synthesizes selenophosphate from selenide and ATP. Selenophosphate is the selenium donor used to synthesize selenocysteine, which is co-translationally incorporated into selenoproteins at in-frame UGA codons. This protein itself contains a selenocysteine residue in its predicted active site. The 3' UTR of the gene has a stem-loop secondary structure called a selenocysteine insertion sequence (SECIS) element, which allows UGA to direct the incorporation of selenocysteine rather than signal a translational stop. Alternatively spliced transcripts have been identified, but their biological validity has not been determined. [provided by RefSeq]



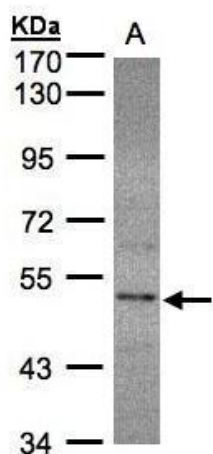
[View online »](#)

**Synonyms:** SPS2; SPS2b

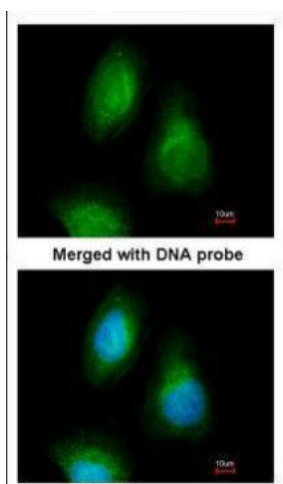
**Note:** Seq homology of immunogen across species: Chimpanzee (100%)

**Protein Pathways:** Metabolic pathways, Selenoamino acid metabolism

**Product images:**



Sample (30ug whole cell lysate). A:HeLa S3. 7.5% SDS PAGE. TA308431 diluted at 1:1000



Immunofluorescence analysis of paraformaldehyde-fixed HeLa, using SEPHS2 (TA308431) antibody at 1:200 dilution.