

Product datasheet for **TA308429**

NEK7 Rabbit Polyclonal Antibody

Product data:

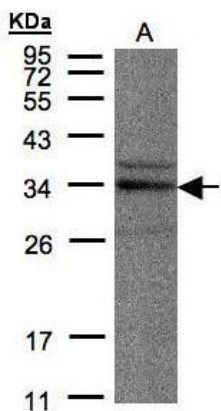
Product Type:	Primary Antibodies
Applications:	IF, IHC, WB
Recommended Dilution:	ICC/IF:1:100-1:1000; IHC:1:100-1:1000; WB:1:500-1:3000
Reactivity:	Human (Predicted: Rat, Xenopus, Chicken, Rhesus Monkey, X. tropicalis, Mouse)
Host:	Rabbit
Isotype:	IgG
Clonality:	Polyclonal
Immunogen:	Synthetic peptide corresponding to a region within amino acids 238 and 302 of NEK7 (Uniprot ID#Q8TDX7)
Formulation:	0.1M Tris, 0.1M Glycine, 10% Glycerol (pH7). 0.01% Thimerosal was added as a preservative.
Concentration:	lot specific
Purification:	Purified by antigen-affinity chromatography.
Conjugation:	Unconjugated
Storage:	Store at -20°C as received.
Stability:	Stable for 12 months from date of receipt.
Predicted Protein Size:	35 kDa
Gene Name:	NIMA related kinase 7
Database Link:	NP_598001 Entrez Gene 59125 Mouse Entrez Gene 360850 Rat Entrez Gene 140609 Human Q8TDX7
Background:	NIMA-related kinases share high amino acid sequence identity with the gene product of the <i>Aspergillus nidulans</i> 'never in mitosis A' gene, which controls initiation of mitosis. [supplied by OMIM]
Synonyms:	NIMA (never in mitosis gene a)-related kinase 7; NIMA-related kinase 7; OTTHUMP00000033680
Note:	Seq homology of immunogen across species: Mouse (93%), Rat (100%), <i>Xenopus laevis</i> (80%), <i>Xenopus Tropicalis</i> (87%), Chicken (93%), Rhesus Monkey (100%)



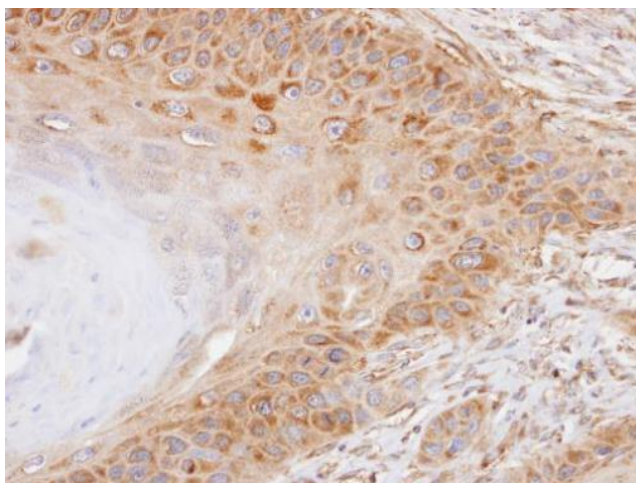
[View online »](#)

Protein Families: Druggable Genome, Protein Kinase

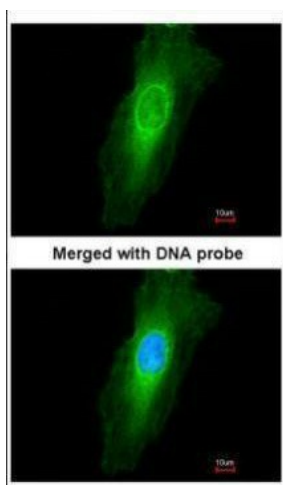
Product images:



Sample (30 ug of whole cell lysate). A:HeLa S3.
12% SDS PAGE. TA308429 diluted at 1:500



Immunohistochemical analysis of paraffin-
embedded Tw2.6 xenograft, using NEK7
(TA308429) antibody at 1:100 dilution.



Immunofluorescence analysis of paraformaldehyde-fixed HeLa, using NEK7 (TA308429) antibody at 1:200 dilution.