

Product datasheet for **TA308427**

RPS3A Rabbit Polyclonal Antibody

Product data:

Product Type:	Primary Antibodies
Applications:	IF, IHC, WB
Recommended Dilution:	ICC/IF:1:100-1:1000; IHC:1:100-1:1000; WB:1:500-1:3000
Reactivity:	Human, Mouse (Predicted: Bovine)
Host:	Rabbit
Isotype:	IgG
Clonality:	Polyclonal
Immunogen:	Recombinant fragment corresponding to a region within amino acids 14 and 264 of RPS3A (Uniprot ID#P61247)
Formulation:	0.1M Tris, 0.1M Glycine, 10% Glycerol (pH7). 0.01% Thimerosal was added as a preservative.
Concentration:	lot specific
Purification:	Purified by antigen-affinity chromatography.
Conjugation:	Unconjugated
Storage:	Store at -20°C as received.
Stability:	Stable for 12 months from date of receipt.
Predicted Protein Size:	30 kDa
Gene Name:	ribosomal protein S3A
Database Link:	NP_000997 Entrez Gene 6189 Human P61247



[View online »](#)

Background:

Ribosomes, the organelles that catalyze protein synthesis, consist of a small 40S subunit and a large 60S subunit. Together these subunits are composed of 4 RNA species and approximately 80 structurally distinct proteins. This gene encodes a ribosomal protein that is a component of the 40S subunit. The protein belongs to the S3AE family of ribosomal proteins. It is located in the cytoplasm. Disruption of the gene encoding rat ribosomal protein S3a, also named v-fos transformation effector protein, in v-fos-transformed rat cells results in reversion of the transformed phenotype. Transcript variants utilizing alternative transcription start sites have been described. This gene is co-transcribed with the U73A and U73B small nucleolar RNA genes, which are located in its fourth and third introns, respectively. As is typical for genes encoding ribosomal proteins, there are multiple processed pseudogenes of this gene dispersed through the genome. [provided by RefSeq]

Synonyms:

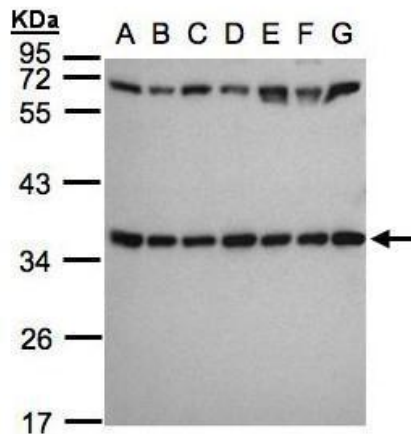
FTE1; MFTL; S3A

Note:

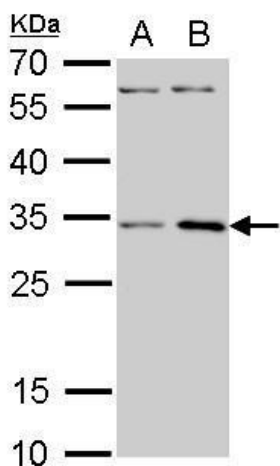
Seq homology of immunogen across species: Bovine (100%)

Protein Pathways:

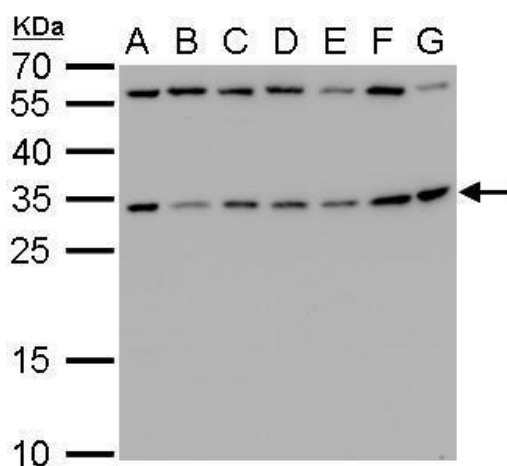
Ribosome

Product images:


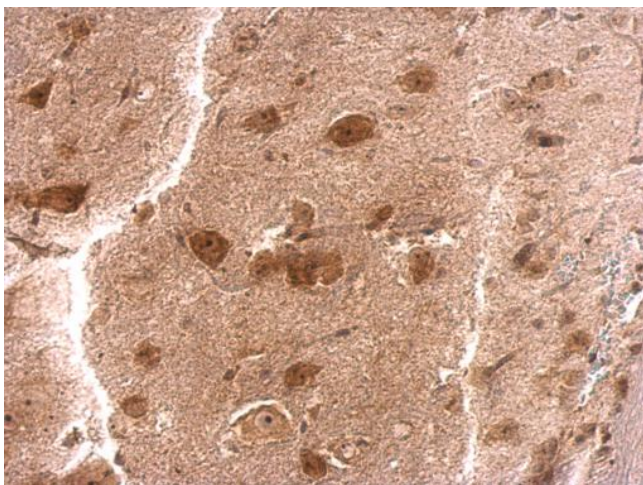
Sample (30 ug whole cell lysate). A: 293T. B: A431. C: H1299. D: HeLa S3. E: Hep G2. F: MOLT4. G: Raji. 12% SDS PAGE. TA308427 diluted at 1:1000



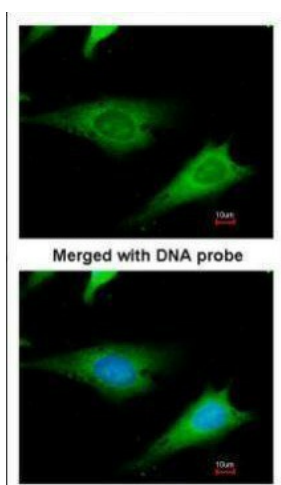
RPS3A antibody detects RPS3A protein by Western blot analysis. A. 30 ug PC-12 whole cell lysate/extract. B. 30 ug Rat2 whole cell lysate/extract. 12 % SDS-PAGE. RPS3A antibody (TA308427) dilution: 1:1000



RPS3A antibody detects RPS3A protein by Western blot analysis. A. 30 ug Neuro2A whole cell lysate/extract. B. 30 ug GL261 whole cell lysate/extract. C. 30 ug C8D30 whole cell lysate/extract. D. 30 ug NIH-3T3 whole cell lysate/extract. E. 30 ug BCL-1 whole



RPS3A antibody detects RPS3A protein at cytosol on mouse brain stem by immunohistochemical analysis. Sample: Paraffin-embedded mouse brain stem. RPS3A antibody (TA308427) dilution: 1:200.



Immunofluorescence analysis of paraformaldehyde-fixed HeLa, using ribosomal protein S3a (TA308427) antibody at 1:200 dilution.