

## Product datasheet for **TA308426**

### PLA2G3 Rabbit Polyclonal Antibody

#### Product data:

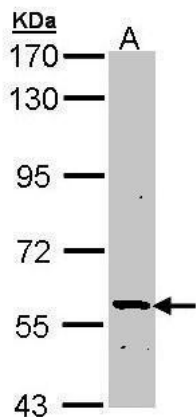
Product Type:	Primary Antibodies
Applications:	WB
Recommended Dilution:	WB:1:500-1:3000
Reactivity:	Human
Host:	Rabbit
Isotype:	IgG
Clonality:	Polyclonal
Immunogen:	Recombinant fragment corresponding to a region within amino acids 263 and 502 of PLA2G3 (Uniprot ID#Q9NZ20)
Formulation:	0.1M Tris, 0.1M Glycine, 10% Glycerol (pH7). 0.01% Thimerosal was added as a preservative.
Purification:	Purified by antigen-affinity chromatography.
Conjugation:	Unconjugated
Storage:	Store at -20°C as received.
Stability:	Stable for 12 months from date of receipt.
Predicted Protein Size:	57 kDa
Gene Name:	phospholipase A2 group III
Database Link:	<a href="#">NP_056530</a> <a href="#">Entrez Gene 50487 Human Q9NZ20</a>
Background:	PLA2G3 belongs to the family of secreted phospholipase A2 (sPLA2; EC 3.1.1.4) proteins. These Ca(2+)-dependent lipolytic enzymes have a conserved Ca(2+)-binding loop and a his-asp dyad in the catalytic site (Murakami et al., 2003 [PubMed 12522102]). [supplied by OMIM]
Synonyms:	GIII-SPLA2; sPLA2-III; SPLA2III
Protein Families:	Druggable Genome, Secreted Protein



[View online »](#)

**Protein Pathways:**

alpha-Linolenic acid metabolism, Arachidonic acid metabolism, Ether lipid metabolism, Fc epsilon RI signaling pathway, Glycerophospholipid metabolism, GnRH signaling pathway, Linoleic acid metabolism, Long-term depression, MAPK signaling pathway, Metabolic pathways, Vascular smooth muscle contraction, VEGF signaling pathway

**Product images:**

Sample (30 ug of whole cell lysate). A: Molt-4.  
7.5% SDS PAGE. TA308426 diluted at 1:1000.