

Product datasheet for **TA308425**

Fibrinogen gamma chain (FGG) Rabbit Polyclonal Antibody

Product data:

Product Type:	Primary Antibodies
Applications:	IF, IHC, WB
Recommended Dilution:	ICC/IF:1:100-1:1000; IHC:1:100-1:1000; WB:1:500-1:3000
Reactivity:	Human
Host:	Rabbit
Isotype:	IgG
Clonality:	Polyclonal
Immunogen:	Recombinant protein fragment contain a sequence corresponding to a region within amino acids 1 and 405 of Fibrinogen gamma
Formulation:	0.1M Tris, 0.1M Glycine, 10% Glycerol (pH7). 0.01% Thimerosal was added as a preservative.
Concentration:	lot specific
Purification:	Purified by antigen-affinity chromatography.
Conjugation:	Unconjugated
Storage:	Store at -20°C as received.
Stability:	Stable for 12 months from date of receipt.
Predicted Protein Size:	50 kDa
Gene Name:	fibrinogen gamma chain
Database Link:	NP_068656 Entrez Gene 2266 Human P02679
Background:	The protein encoded by this gene is the gamma component of fibrinogen, a blood-borne glycoprotein comprised of three pairs of nonidentical polypeptide chains. Following vascular injury, fibrinogen is cleaved by thrombin to form fibrin which is the most abundant component of blood clots. In addition, various cleavage products of fibrinogen and fibrin regulate cell adhesion and spreading, display vasoconstrictor and chemotactic activities, and are mitogens for several cell types. Mutations in this gene lead to several disorders, including dysfibrinogenemia, hypofibrinogenemia and thrombophilia. Alternative splicing results in two transcript variants encoding different isoforms. [provided by RefSeq]



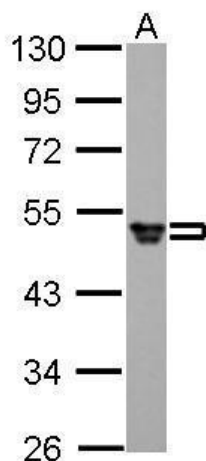
[View online »](#)

Synonyms: fibrinogen; fibrinogen gamma chain; gamma chain; gamma polypeptide

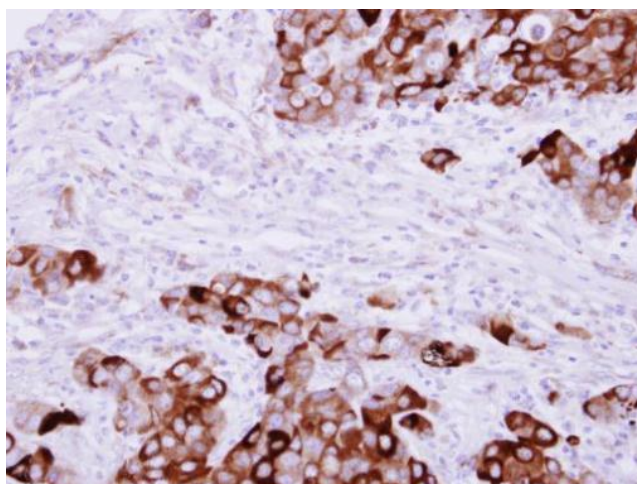
Protein Families: Druggable Genome, Secreted Protein, Transmembrane

Protein Pathways: Complement and coagulation cascades

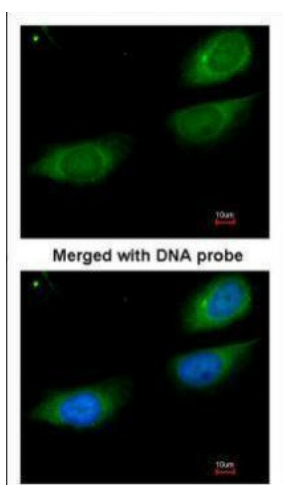
Product images:



Fibrinogen gamma antibody detects FGG protein by Western blot analysis. A. 30 ug HepG2 whole cell lysate/extract. 10 % SDS-PAGE. Fibrinogen gamma antibody (TA308425) dilution: 1:1000



Fibrinogen gamma antibody detects FGG protein at cytosol on Breast Carcinoma by immunohistochemical analysis. Sample: Paraffin-embedded Breast Carcinoma. Fibrinogen gamma antibody (TA308425) dilution: 1:250.



Immunofluorescence analysis of paraformaldehyde-fixed HeLa, using Fibrinogen gamma (TA308425) antibody at 1:200 dilution.