

## Product datasheet for **TA308424**

### **CAMKK2 Rabbit Polyclonal Antibody**

#### **Product data:**

<b>Product Type:</b>	Primary Antibodies
<b>Applications:</b>	IHC, WB
<b>Recommended Dilution:</b>	IHC:1:100-1:1000; WB:1:500-1:3000
<b>Reactivity:</b>	Human (Predicted: Rat)
<b>Host:</b>	Rabbit
<b>Isotype:</b>	IgG
<b>Clonality:</b>	Polyclonal
<b>Immunogen:</b>	Synthetic peptide corresponding to a region within amino acids 1 and 498 of CaMKK beta
<b>Formulation:</b>	1XPBS, 20% Glycerol (pH7). 0.025% ProClin 300 was added as a preservative.
<b>Concentration:</b>	lot specific
<b>Purification:</b>	Purified by antigen-affinity chromatography.
<b>Conjugation:</b>	Unconjugated
<b>Storage:</b>	Store at -20°C as received.
<b>Stability:</b>	Stable for 12 months from date of receipt.
<b>Predicted Protein Size:</b>	55 kDa
<b>Gene Name:</b>	calcium/calmodulin-dependent protein kinase kinase 2
<b>Database Link:</b>	<a href="#">NP_006540</a> <a href="#">Entrez Gene 83506 Rat</a> <a href="#">Entrez Gene 10645 Human</a> <a href="#">Q96RR4</a>
<b>Background:</b>	The product of this gene belongs to the Serine/Threonine protein kinase family, and to the Ca(2+)/calmodulin-dependent protein kinase subfamily. This protein plays a role in the calcium/calmodulin-dependent (CaM) kinase cascade by phosphorylating the downstream kinases CaMK1 and CaMK4. Seven transcript variants encoding six distinct isoforms have been identified for this gene. Additional splice variants have been described but their full-length nature has not been determined. The identified isoforms exhibit a distinct ability to undergo autophosphorylation and to phosphorylate the downstream kinases. [provided by RefSeq]
<b>Synonyms:</b>	CAMKK; CAMKKB



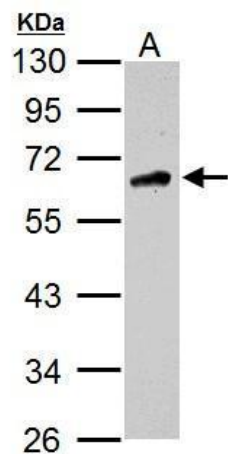
[View online »](#)

**Note:** Seq homology of immunogen across species: Rat (86%)

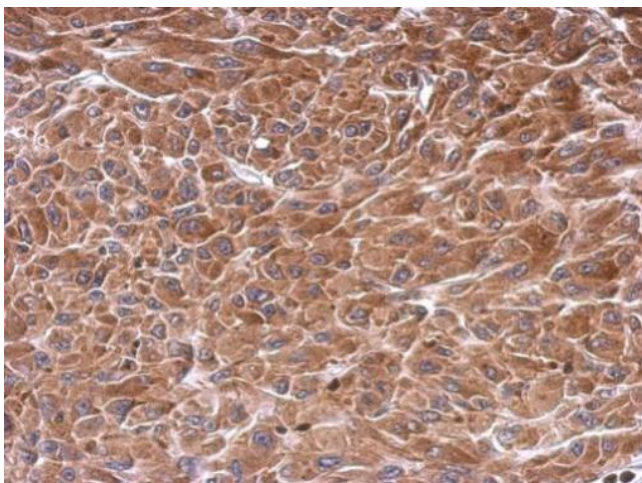
**Protein Families:** Druggable Genome, Protein Kinase, Transcription Factors

**Protein Pathways:** Adipocytokine signaling pathway

**Product images:**



Sample (30 ug of whole cell lysate). A: U87-MG. 10% SDS PAGE. TA308424 diluted at 1:1000.



Immunohistochemical analysis of paraffin-embedded U87 xenograft, using CaMKK beta (TA308424) antibody at 1:500 dilution.