

Product datasheet for **TA308423**

Collagen I (COL1A2) Rabbit Polyclonal Antibody

Product data:

Product Type:	Primary Antibodies
Applications:	IF, WB
Recommended Dilution:	ICC/IF:1:100-1:1000; WB:1:1000-1:10000
Reactivity:	Human (Predicted: Rhesus Monkey)
Host:	Rabbit
Isotype:	IgG
Clonality:	Polyclonal
Immunogen:	Recombinant fragment corresponding to a region within amino acids 1057 and 1366 of Collagen I alpha2 (Uniprot ID#P08123)
Formulation:	1XPBS, 1% BSA, 20% Glycerol (pH7). 0.025% ProClin 300 was added as a preservative.
Concentration:	lot specific
Purification:	Purified by antigen-affinity chromatography.
Conjugation:	Unconjugated
Storage:	Store at -20°C as received.
Stability:	Stable for 12 months from date of receipt.
Predicted Protein Size:	129 kDa
Gene Name:	collagen type I alpha 2 chain
Database Link:	NP_000080 Entrez Gene 1278 Human P08123



[View online »](#)

Background:

This gene encodes the pro-alpha2 chain of type I collagen whose triple helix comprises two alpha1 chains and one alpha2 chain. Type I is a fibril-forming collagen found in most connective tissues and is abundant in bone, cornea, dermis and tendon. Mutations in this gene are associated with osteogenesis imperfecta types I-IV, Ehlers-Danlos syndrome type VIIB, recessive Ehlers-Danlos syndrome Classical type, idiopathic osteoporosis, and atypical Marfan syndrome. Symptoms associated with mutations in this gene, however, tend to be less severe than mutations in the gene for the alpha1 chain of type I collagen (COL1A1) reflecting the different role of alpha2 chains in matrix integrity. Three transcripts, resulting from the use of alternate polyadenylation signals, have been identified for this gene. [provided by R. Dalgleish]

Synonyms:

OI4

Note:

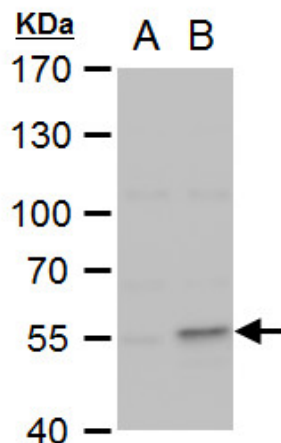
Seq homology of immunogen across species: Rhesus Monkey (100%)

Protein Families:

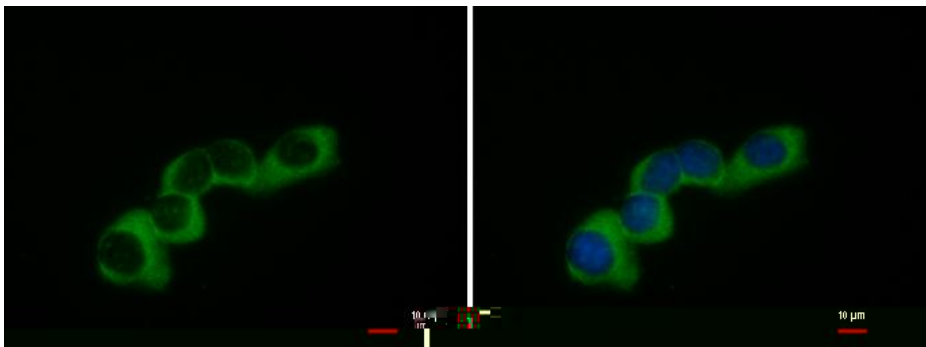
Druggable Genome

Protein Pathways:

ECM-receptor interaction, Focal adhesion

Product images:


COL1A2 antibody [C2C3], C-term detects COL1A2 protein by western blot analysis. A. 30 ug 293T whole cell extract. B. 30 ug whole cell extract of GFP-human COL1A2-transfected 293T cells (partial). 10 % SDS-PAGE. COL1A2 antibody [C2C3], C-term (TA308423) di



COL1A2 antibody [C2C3], C-term detects COL1A2 protein at cytoplasm by immunofluorescent analysis. Sample: NIH-3T3 cells were fixed in ice-cold MeOH for 5 min. Green: COL1A2 protein stained by COL1A2 antibody [C2C3], C-term (TA308423) diluted at 1:500. Blu