

Product datasheet for **TA308421**

ADCK1 Rabbit Polyclonal Antibody

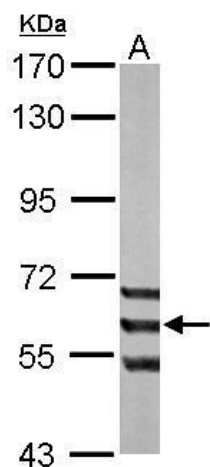
Product data:

Product Type:	Primary Antibodies
Applications:	IF, WB
Recommended Dilution:	ICC/IF:1:100-1:1000; WB:1:500-1:3000
Reactivity:	Human, Mouse (Predicted: Chicken, Bovine)
Host:	Rabbit
Isotype:	IgG
Clonality:	Polyclonal
Immunogen:	Recombinant protein fragment contain a sequence corresponding to a region within amino acids 45 and 213 of ADCK1
Formulation:	0.1M Tris, 0.1M Glycine, 10% Glycerol (pH7). 0.01% Thimerosal was added as a preservative.
Concentration:	lot specific
Purification:	Purified by antigen-affinity chromatography.
Conjugation:	Unconjugated
Storage:	Store at -20°C as received.
Stability:	Stable for 12 months from date of receipt.
Predicted Protein Size:	60 kDa
Gene Name:	aarF domain containing kinase 1
Database Link:	NP_001136017 Entrez Gene 72113 Mouse Entrez Gene 57143 Human Q86TW2
Synonyms:	FLJ39600
Note:	Seq homology of immunogen across species: Chicken (84%), Bovine (95%)
Protein Families:	Druggable Genome, Protein Kinase, Secreted Protein

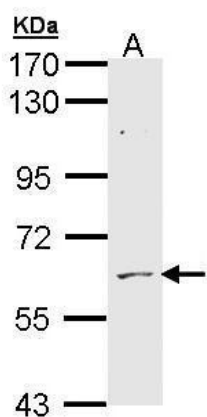


[View online »](#)

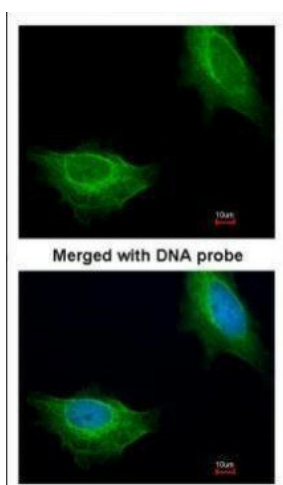
Product images:



Sample (50 ug of whole cell lysate). A: mouse liver. 7.5% SDS PAGE. TA308421 diluted at 1:1000.



Sample (30 ug of whole cell lysate). A: H1299. 7.5% SDS PAGE. TA308421 diluted at 1:1000.



Immunofluorescence analysis of paraformaldehyde-fixed HeLa, using ADCK1 (TA308421) antibody at 1:200 dilution.