

Product datasheet for **TA308420**

alpha Tubulin (TUBA4A) Rabbit Polyclonal Antibody

Product data:

Product Type:	Primary Antibodies
Applications:	IF, IHC, WB
Recommended Dilution:	WB 1:500 - 1:3000, IHC 1:100-1:1000, IF 1:100 - 1:1000
Reactivity:	Human, Mouse (Predicted: Rat, Sheep, Bovine)
Host:	Rabbit
Isotype:	IgG
Clonality:	Polyclonal
Immunogen:	Recombinant fragment corresponding to a region within amino acids 21 and 243 of alpha Tubulin 4a (Uniprot ID#P68366)
Formulation:	1XPBS, 20% Glycerol (pH7). 0.025% ProClin 300 was added as a preservative.
Concentration:	lot specific
Purification:	Purified by antigen-affinity chromatography.
Conjugation:	Unconjugated
Storage:	Store at -20°C as received.
Stability:	Stable for 12 months from date of receipt.
Predicted Protein Size:	50 kDa
Gene Name:	tubulin alpha 4a
Database Link:	NP_005991 Entrez Gene 22145 MouseEntrez Gene 316531 RatEntrez Gene 7277 Human P68366



[View online »](#)

Background: Microtubules of the eukaryotic cytoskeleton perform essential and diverse functions and are composed of a heterodimer of alpha and beta tubulin. The genes encoding these microtubule constituents are part of the tubulin superfamily, which is composed of six distinct families. Genes from the alpha, beta and gamma tubulin families are found in all eukaryotes. The alpha and beta tubulins represent the major components of microtubules, while gamma tubulin plays a critical role in the nucleation of microtubule assembly. There are multiple alpha and beta tubulin genes and they are highly conserved among and between species. This gene encodes an alpha tubulin that is a highly conserved homolog of a rat testis-specific alpha tubulin. [provided by RefSeq]

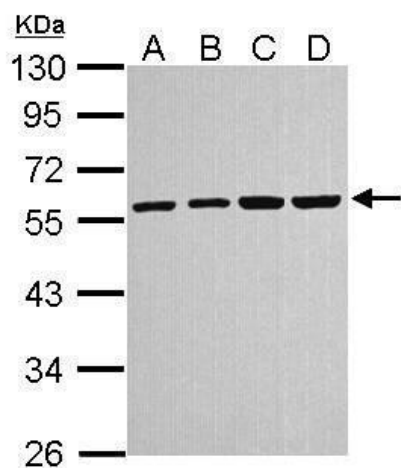
Synonyms: ALS22; H2-ALPHA; TUBA1

Note: Seq homology of immunogen across species: Rat (100%), Sheep (100%), Bovine (100%)

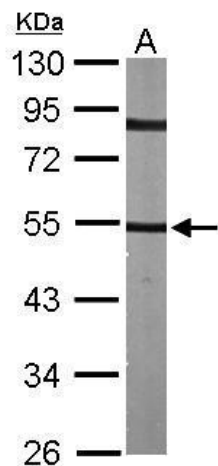
Protein Families: Druggable Genome

Protein Pathways: Gap junction, Pathogenic Escherichia coli infection

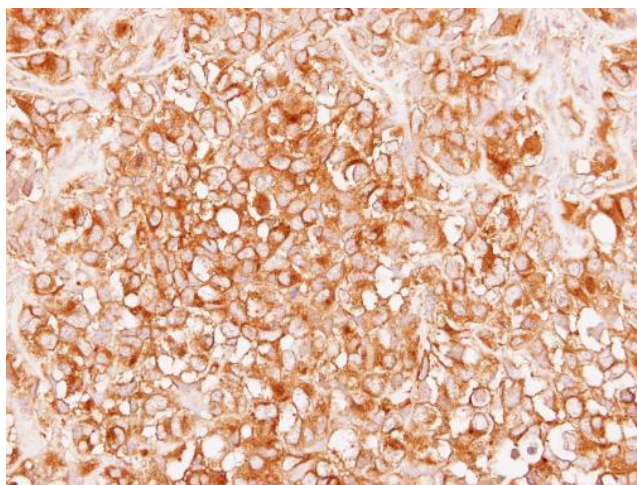
Product images:



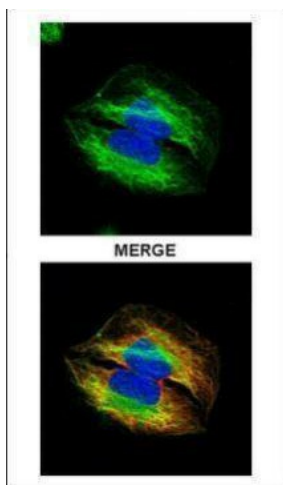
Sample (30 ug of whole cell lysate). A: A431. B: H1299. C: HeLa. D: Molt-4. 10% SDS PAGE. TA308420 diluted at 1:1000.



Sample (30 ug of whole cell lysate). A: NIH-3T3. 10% SDS PAGE. TA308420 diluted at 1:1000.



Immunohistochemical analysis of paraffin-embedded H661 xenograft, using alpha Tubulin 4a (TA308420) antibody at 1:100 dilution.



Confocal immunofluorescence analysis (Olympus FV10i) of paraformaldehyde-fixed U2OS, using alpha Tubulin 4a (TA308420) antibody (Green) at 1:500 dilution. Alpha-tubulin filaments were labeled with anti-alpha tubulin antibody (Red) at 1:2000.