

Product datasheet for **TA308419**

Glutathione S Transferase alpha 1 (GSTA1) Rabbit Polyclonal Antibody

Product data:

Product Type:	Primary Antibodies
Applications:	IF, IHC, WB
Recommended Dilution:	ICC/IF:1:100-1:1000; IHC:1:100-1:1000; WB:1:1000-1:10000
Reactivity:	Human
Host:	Rabbit
Isotype:	IgG
Clonality:	Polyclonal
Formulation:	0.1M Tris, 0.1M Glycine, 10% Glycerol (pH7). 0.01% Thimerosal was added as a preservative.
Concentration:	lot specific
Purification:	Affinity purified by Protein A.
Conjugation:	Unconjugated
Storage:	Store at -20°C as received.
Stability:	Stable for 12 months from date of receipt.
Predicted Protein Size:	26 kDa
Gene Name:	glutathione S-transferase alpha 1
Database Link:	NP_665683 Entrez Gene 2938 Human P08263



[View online »](#)

Background:

Cytosolic and membrane-bound forms of glutathione S-transferase are encoded by two distinct supergene families. These enzymes function in the detoxification of electrophilic compounds, including carcinogens, therapeutic drugs, environmental toxins and products of oxidative stress, by conjugation with glutathione. The genes encoding these enzymes are known to be highly polymorphic. These genetic variations can change an individual's susceptibility to carcinogens and toxins as well as affect the toxicity and efficacy of some drugs. At present, eight distinct classes of the soluble cytoplasmic mammalian glutathione S-transferases have been identified: alpha, kappa, mu, omega, pi, sigma, theta and zeta. This gene encodes a glutathione S-transferase belonging to the alpha class. The alpha class genes, located in a cluster mapped to chromosome 6, are the most abundantly expressed glutathione S-transferases in liver. In addition to metabolizing bilirubin and certain anti-cancer drugs in the liver, the alpha class of these enzymes exhibit glutathione peroxidase activity thereby protecting the cells from reactive oxygen species and the products of peroxidation. [provided by RefSeq]

Synonyms:

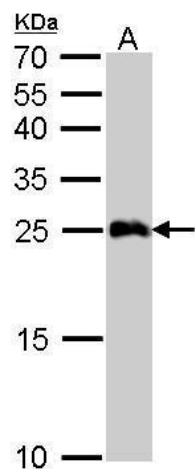
GST-epsilon; GST2; GSTA1-1; GTH1

Protein Families:

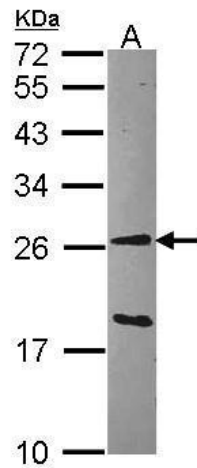
Druggable Genome

Protein Pathways:

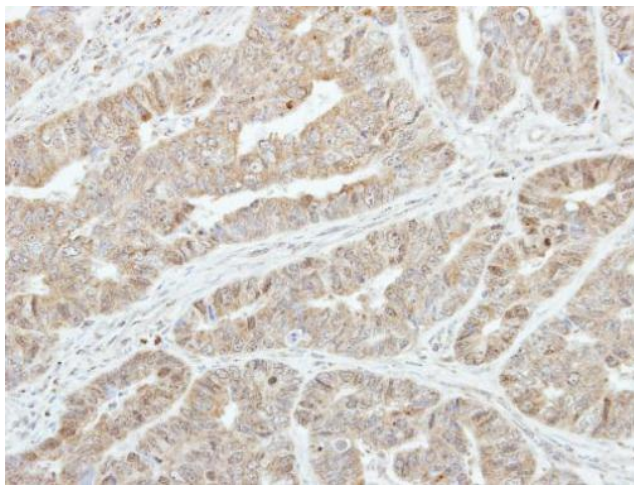
Drug metabolism - cytochrome P450, Glutathione metabolism, Metabolism of xenobiotics by cytochrome P450

Product images:

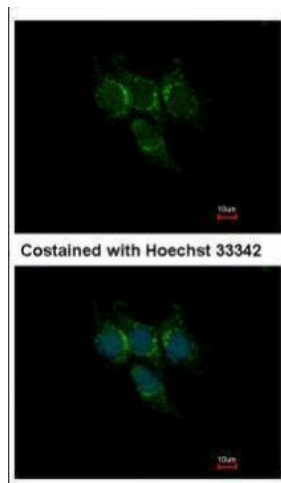
GSTA1 antibody detects GSTA1 protein by Western blot analysis. A. 50 ug mouse liver lysate/extract. 12 % SDS-PAGE. GSTA1 antibody (TA308419) dilution: 1:5000



Sample (30 ug of whole cell lysate). A: Hep G2. 12% SDS PAGE. GSTA1 antibody. TA308419 diluted at 1:1000.



Immunohistochemical analysis of paraffin-embedded Colon ca, using GSTA1 (TA308419) antibody at 1:250 dilution.



Immunofluorescence analysis of methanol-fixed Hep3B, using GSTA1 (TA308419) antibody at 1:500 dilution.