

Product datasheet for **TA308418**

DDX39 (DDX39A) Rabbit Polyclonal Antibody

Product data:

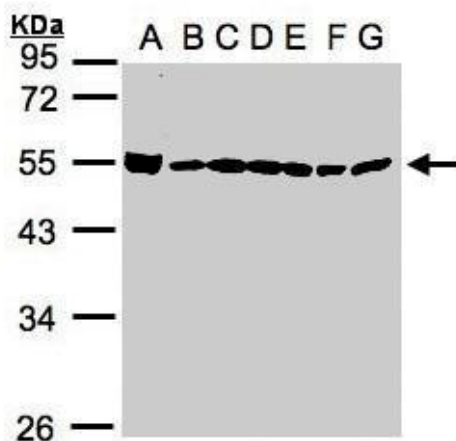
Product Type:	Primary Antibodies
Applications:	IF, IHC, WB
Recommended Dilution:	ICC/IF:1:100-1:1000; IHC:1:100-1:1000; WB:1:500-1:3000
Reactivity:	Human (Predicted: Monkey, Xenopus, Zebrafish, Bovine, X. tropicalis)
Host:	Rabbit
Isotype:	IgG
Clonality:	Polyclonal
Immunogen:	Recombinant fragment corresponding to a region within amino acids 53 and 425 of DDX39 (Uniprot ID#O00148)
Formulation:	1XPBS, 1% BSA, 20% Glycerol (pH7). 0.01% Thimerosal was added as a preservative.
Concentration:	lot specific
Purification:	Purified by antigen-affinity chromatography.
Conjugation:	Unconjugated
Storage:	Store at -20°C as received.
Stability:	Stable for 12 months from date of receipt.
Predicted Protein Size:	49 kDa
Gene Name:	DEAD-box helicase 39A
Database Link:	NP_005795 Entrez Gene 718822 Monkey Entrez Gene 10212 Human O00148
Background:	This gene encodes a member of the DEAD box protein family. These proteins are characterized by the conserved motif Asp-Glu-Ala-Asp (DEAD) and are putative RNA helicases. They are implicated in a number of cellular processes involving alteration of RNA secondary structure, such as translation initiation, nuclear and mitochondrial splicing, and ribosome and spliceosome assembly. Based on their distribution patterns, some members of the DEAD box protein family are believed to be involved in embryogenesis, spermatogenesis, and cellular growth and division. [provided by RefSeq]
Synonyms:	BAT1; BAT1L; DDX39; DDXL; URH49



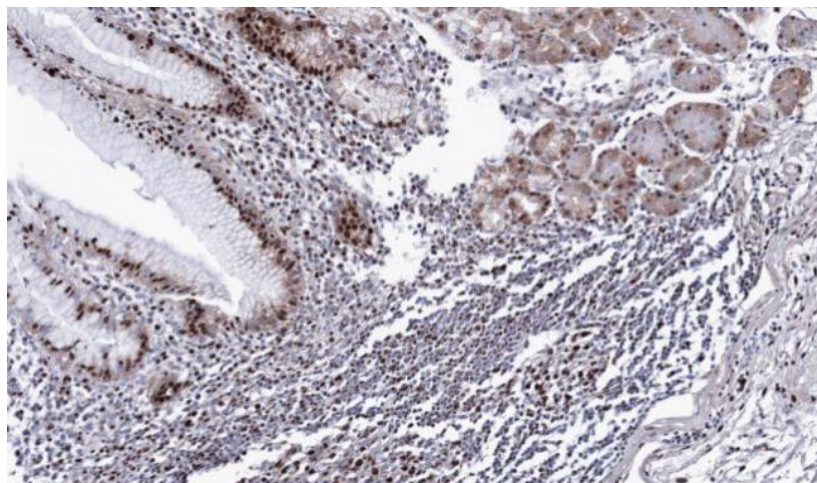
[View online »](#)

Note: Seq homology of immunogen across species: Monkey (100%), Xenopus laevis (92%), Zebrafish (92%), Bovine (97%), Xenopus tropicalis (92%)

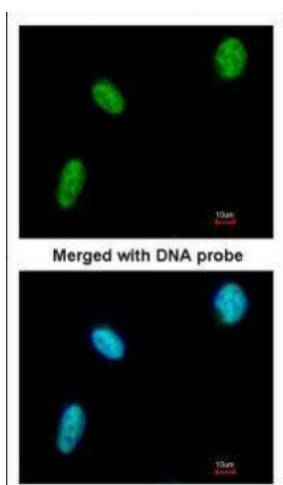
Product images:



Sample (30ug whole cell lysate). A: 293T. B: A431. C: H1299. D: HeLa S3. E: Hep G2. F: MOLT4. G: Raji. 10% SDS PAGE. TA308418 diluted at 1:1000



Immunohistochemical analysis of paraffin-embedded gastric CA, using DDX39 (TA308418) antibody at 1:100 dilution.



Immunofluorescence analysis of paraformaldehyde-fixed HeLa, using DDX39 (TA308418) antibody at 1:200 dilution.