

Product datasheet for **TA308417**

BMP10 Rabbit Polyclonal Antibody

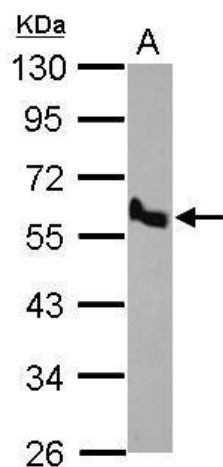
Product data:

Product Type:	Primary Antibodies
Applications:	IHC, WB
Recommended Dilution:	IHC:1:100-1:1000; WB:1:500-1:3000
Reactivity:	Human (Predicted: Mouse, Rat, Bovine)
Host:	Rabbit
Isotype:	IgG
Clonality:	Polyclonal
Immunogen:	Synthetic peptide corresponding to a region within amino acids 360 and 424 of BMP10 (Uniprot ID#O95393)
Formulation:	0.1M Tris, 0.1M Glycine, 10% Glycerol (pH7). 0.01% Thimerosal was added as a preservative.
Concentration:	lot specific
Purification:	Purified by antigen-affinity chromatography.
Conjugation:	Unconjugated
Storage:	Store at -20°C as received.
Stability:	Stable for 12 months from date of receipt.
Predicted Protein Size:	48 kDa
Gene Name:	bone morphogenetic protein 10
Database Link:	NP_055297 Entrez Gene 12154 Mouse Entrez Gene 500245 Rat Entrez Gene 27302 Human O95393
Background:	The protein encoded by this gene is a member of the TGF-beta family of growth factors. Data suggest that the similar protein in mouse plays an important role in trabeculation of the embryonic heart. In human, this protein may signal through receptor serine/threonine kinases. [provided by RefSeq]
Synonyms:	MGC126783
Note:	Seq homology of immunogen across species: Mouse (100%), Rat (100%), Bovine (100%)
Protein Families:	Druggable Genome, Secreted Protein, Transmembrane

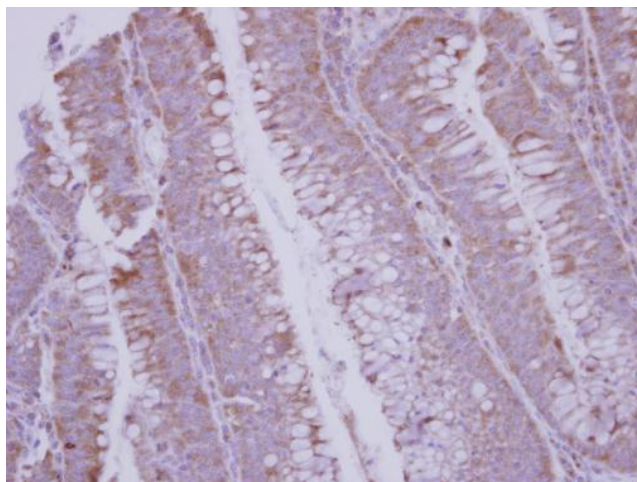


[View online »](#)

Product images:



Sample (30 ug of whole cell lysate). A: H1299.
10% SDS PAGE. TA308417 diluted at 1:500.



Immunohistochemical analysis of paraffin-
embedded Colon ca, using BMP10 (TA308417)
antibody at 1:250 dilution.