

Product datasheet for **TA308416**

Glutathione S Transferase theta 1 (GSTT1) Rabbit Polyclonal Antibody

Product data:

Product Type:	Primary Antibodies
Applications:	IHC, WB
Recommended Dilution:	IHC:1:100-1:1000; WB:1:500-1:3000
Reactivity:	Human
Host:	Rabbit
Isotype:	IgG
Clonality:	Polyclonal
Immunogen:	Recombinant fragment corresponding to a region within amino acids 1 and 240 of GSTT1 (Uniprot ID#P30711)
Formulation:	0.1M Tris, 0.1M Glycine, 10% Glycerol (pH7). 0.01% Thimerosal was added as a preservative.
Concentration:	lot specific
Purification:	Purified by antigen-affinity chromatography.
Conjugation:	Unconjugated
Storage:	Store at -20°C as received.
Stability:	Stable for 12 months from date of receipt.
Predicted Protein Size:	27 kDa
Gene Name:	glutathione S-transferase theta 1
Database Link:	NP_000844 Entrez Gene 2952 Human P30711

Background: Glutathione S-transferase (GST) theta 1 (GSTT1) is a member of a superfamily of proteins that catalyze the conjugation of reduced glutathione to a variety of electrophilic and hydrophobic compounds. Human GSTs can be divided into five main classes: alpha, mu, pi, theta, and zeta. The theta class includes GSTT1 and GSTT2. The GSTT1 and GSTT2 share 55% amino acid sequence identity and both of them were claimed to have an important role in human carcinogenesis. The GSTT1 gene is located approximately 50kb away from the GSTT2 gene. The GSTT1 and GSTT2 genes have a similar structure, being composed of five exons with identical exon/intron boundaries. [provided by RefSeq]

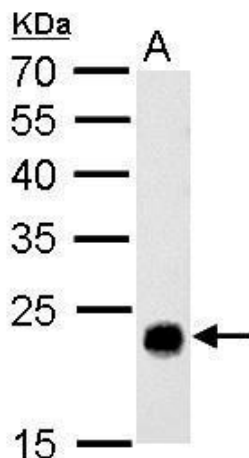


[View online »](#)

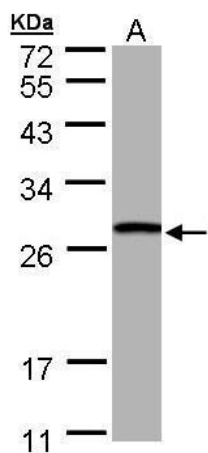
Synonyms: glutathione S-transferase theta 1

Protein Pathways: Drug metabolism - cytochrome P450, Glutathione metabolism, Metabolism of xenobiotics by cytochrome P450

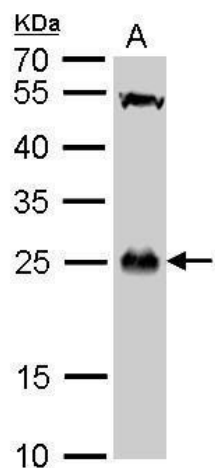
Product images:



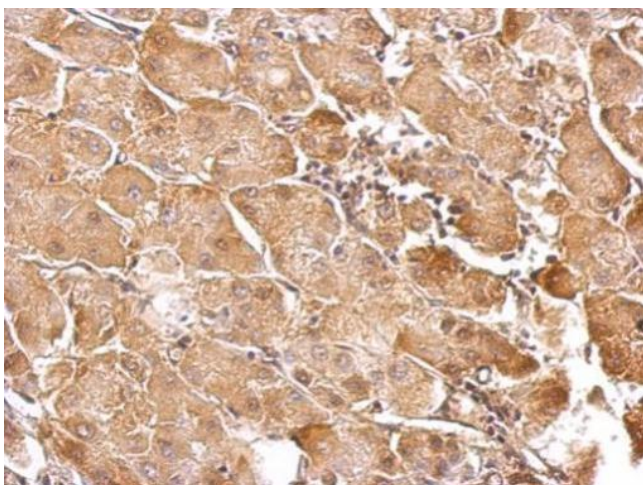
GSTT1 antibody detects GSTT1 protein by Western blot analysis. A. 50 ug rat liver lysate/extract. 12 % SDS-PAGE. GSTT1 antibody (TA308416) dilution: 1:500



Sample (30 ug of whole cell lysate). A: Hep G2. 10% SDS PAGE. TA308416 diluted at 1:1000



GSTT1 antibody detects GSTT1 protein by Western blot analysis. A. 50 ug mouse spleen lysate/extract. 12 % SDS-PAGE. GSTT1 antibody (TA308416) dilution: 1:500



GSTT1 antibody detects GSTT1 protein at cytosol on gastric carcinoma by immunohistochemical analysis. Sample: Paraffin-embedded hepatoma. GSTT1 antibody (TA308416) dilution: 1:500.