

Product datasheet for **TA308415**

HRH2 Rabbit Polyclonal Antibody

Product data:

Product Type:	Primary Antibodies
Applications:	IF, IHC, WB
Recommended Dilution:	FACS:; ICC/IF:1:100-1:1000; IHC:1:100-1:1000; WB:1:500-1:3000
Reactivity:	Human (Predicted: Chimpanzee, Rhesus Monkey)
Host:	Rabbit
Isotype:	IgG
Clonality:	Polyclonal
Immunogen:	Synthetic peptide corresponding to a region within amino acids 1 and 45 of Histamine H2 Receptor (Uniprot ID#P25021)
Formulation:	0.1M Tris, 0.1M Glycine, 10% Glycerol (pH7). 0.01% Thimerosal was added as a preservative.
Concentration:	lot specific
Purification:	Purified by antigen-affinity chromatography.
Conjugation:	Unconjugated
Storage:	Store at -20°C as received.
Stability:	Stable for 12 months from date of receipt.
Predicted Protein Size:	40 kDa
Gene Name:	histamine receptor H2
Database Link:	NP_001124527 Entrez Gene 3274 Human P25021
Background:	Histamine is a ubiquitous messenger molecule released from mast cells, enterochromaffin-like cells, and neurons. Its various actions are mediated by histamine receptors H1, H2, H3 and H4. Histamine receptor H2 belongs to the family 1 of G protein-coupled receptors. It is an integral membrane protein and stimulates gastric acid secretion. It also regulates gastrointestinal motility and intestinal secretion and is thought to be involved in regulating cell growth and differentiation. Alternatively spliced transcript variants encoding different isoforms have been found for this gene. [provided by RefSeq]
Synonyms:	H2R



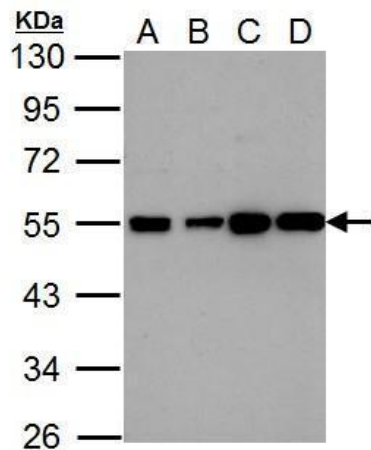
[View online »](#)

Note: Seq homology of immunogen across species: Rhesus Monkey (100%), Chimpanzee (100%)

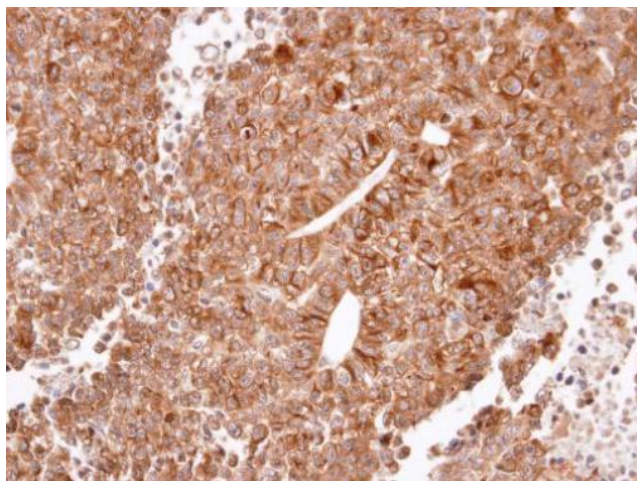
Protein Families: Druggable Genome, GPCR, Transmembrane

Protein Pathways: Calcium signaling pathway, Neuroactive ligand-receptor interaction

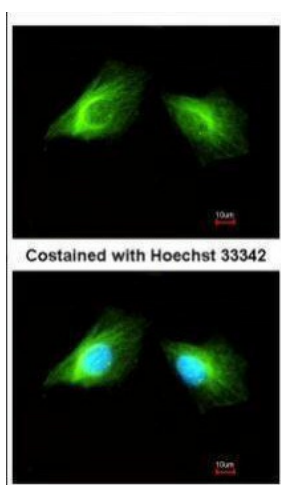
Product images:



Histamine H2 Receptor antibody [N1], N-term detects HRH2 protein by Western blot analysis. A. 30 ug U87-MG whole cell lysate/extract. B. 30 ug SK-N-SH whole cell lysate/extract. 10 % SDS-PAGE. Histamine H2 Receptor antibody [N1], N-term (TA308415) dilutio



Immunohistochemical analysis of paraffin-embedded H520 xenograft, using Histamine H2 Receptor (TA308415) antibody at 1:100 dilution.



Immunofluorescence analysis of methanol-fixed HeLa, using Histamine H2 Receptor (TA308415) antibody at 1:200 dilution.