

## Product datasheet for **TA308413**

### MYBPC2 Rabbit Polyclonal Antibody

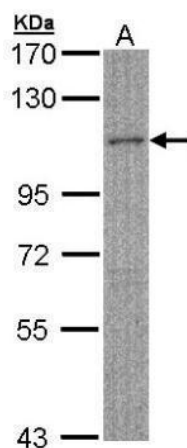
#### Product data:

Product Type:	Primary Antibodies
Applications:	IF, WB
Recommended Dilution:	ICC/IF:1:100-1:1000; WB:1:500-1:3000
Reactivity:	Human (Predicted: Mouse, Rat)
Host:	Rabbit
Isotype:	IgG
Clonality:	Polyclonal
Immunogen:	Recombinant fragment corresponding to a region within amino acids 411 and 729 of MYBPC2 (Uniprot ID#Q14324)
Formulation:	0.1M Tris, 0.1M Glycine, 10% Glycerol (pH7). 0.01% Thimerosal was added as a preservative.
Concentration:	lot specific
Purification:	Purified by antigen-affinity chromatography.
Conjugation:	Unconjugated
Storage:	Store at -20°C as received.
Stability:	Stable for 12 months from date of receipt.
Predicted Protein Size:	128 kDa
Gene Name:	myosin binding protein C, fast type
Database Link:	<a href="#">NP_004524</a> <a href="#">Entrez Gene 233199 Mouse</a> <a href="#">Entrez Gene 292879 Rat</a> <a href="#">Entrez Gene 4606 Human</a> <a href="#">Q14324</a>
Synonyms:	MYBPC; MYBPCF
Note:	Seq homology of immunogen across species: Mouse (92%), Rat (92%)

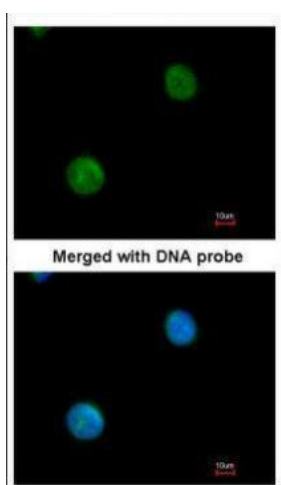


[View online »](#)

## Product images:



Sample (30 ug of whole cell lysate). A: HeLa S3. 7.5 % SDS PAGE. TA308413 diluted at 1:500



Immunofluorescence analysis of paraformaldehyde-fixed HeLa, using MYBPC2 (TA308413) antibody at 1:200 dilution.